

The background of the entire page is a blue-tinted photograph of a large industrial warehouse. In the foreground, a close-up of a heavy-duty black metal conveyor chain is visible, with its links and pins clearly shown. One of the links has the text "RENOLD SD 81X11" stamped on it. The warehouse in the background is filled with numerous large, rectangular metal coils stacked on pallets. A forklift is visible in the distance, and the overall scene conveys a sense of a large-scale industrial operation.

RENOLD

81X Conveyor Chain

Thousands of feet in stock: boxes and reels available

America's Headquarters

2307 Maden Drive
Morristown, TN 37813

Tel: (423) 586-1951

Tel: (800) 251-9012

Fax: (423) 581-2399

sales@renoldjeffrey.com

www.renoldjeffrey.com

Renold Canada

622 rue de Hull
Montreal, Quebec H8R 1V9

Tel: (514) 367-1764

Tel: (800) 265-9970

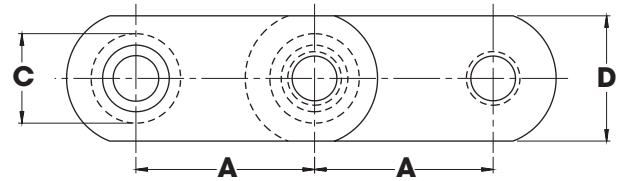
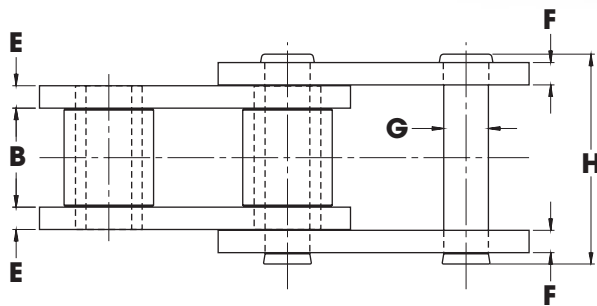
Fax: (800) 661-6118

inquiry@renoldcanada.com

www.renoldcanada.com

81X Conveyor Chain

Thousands of feet in stock: boxes and reels available



81X

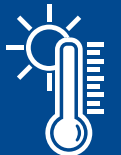
Chain Size	Pitch	Inside Width	Roller Diam	Plate Height	Inner Plate Thick	Outer Plate Thick	Pin Diam	Pin Length	Tensile Strength	Weight
	in	in	in	in	in	in	in	in	lb	lb/ft
	A	B	C	D	E	F	G	H		
81X	2.609	1.062	0.906	1.125	0.156	0.156	0.437	2.078	25,000	2.40
81XH	2.609	1.062	0.906	1.265	0.312	0.219	0.437	2.531	40,000	3.50
81XHH	2.609	1.062	0.906	1.265	0.312	0.312	0.437	2.690	42,000	4.60
81XKD	2.609	1.072	0.903	1.125	0.296	0.219	0.437	2.078	25,000	2.40
81XHKD	2.609	1.072	0.903	1.265	0.296	0.312	0.437	2.531	40,000	3.50

When you succeed, we succeed. That's why Renold's 81X is manufactured from high-specification steels, using precision equipment and processes. All components are constructed and heat treated in-house with thorough quality checks throughout.

We leverage our 150+ years of experience to deliver value and protect your bottom line.

High-Temperature / Kiln Dryer

Available in standard (81XKD) and heavy (81XHKD), these variations are engineered with additional tolerance to allow for material expansion in 400+ °F environments without binding.



Solid bushing and roller to maximize wear life

Quad staked pins designed for tough applications

Pre-stressed premium steels increase fatigue resistance

