

Hundreds of years of chain experience...

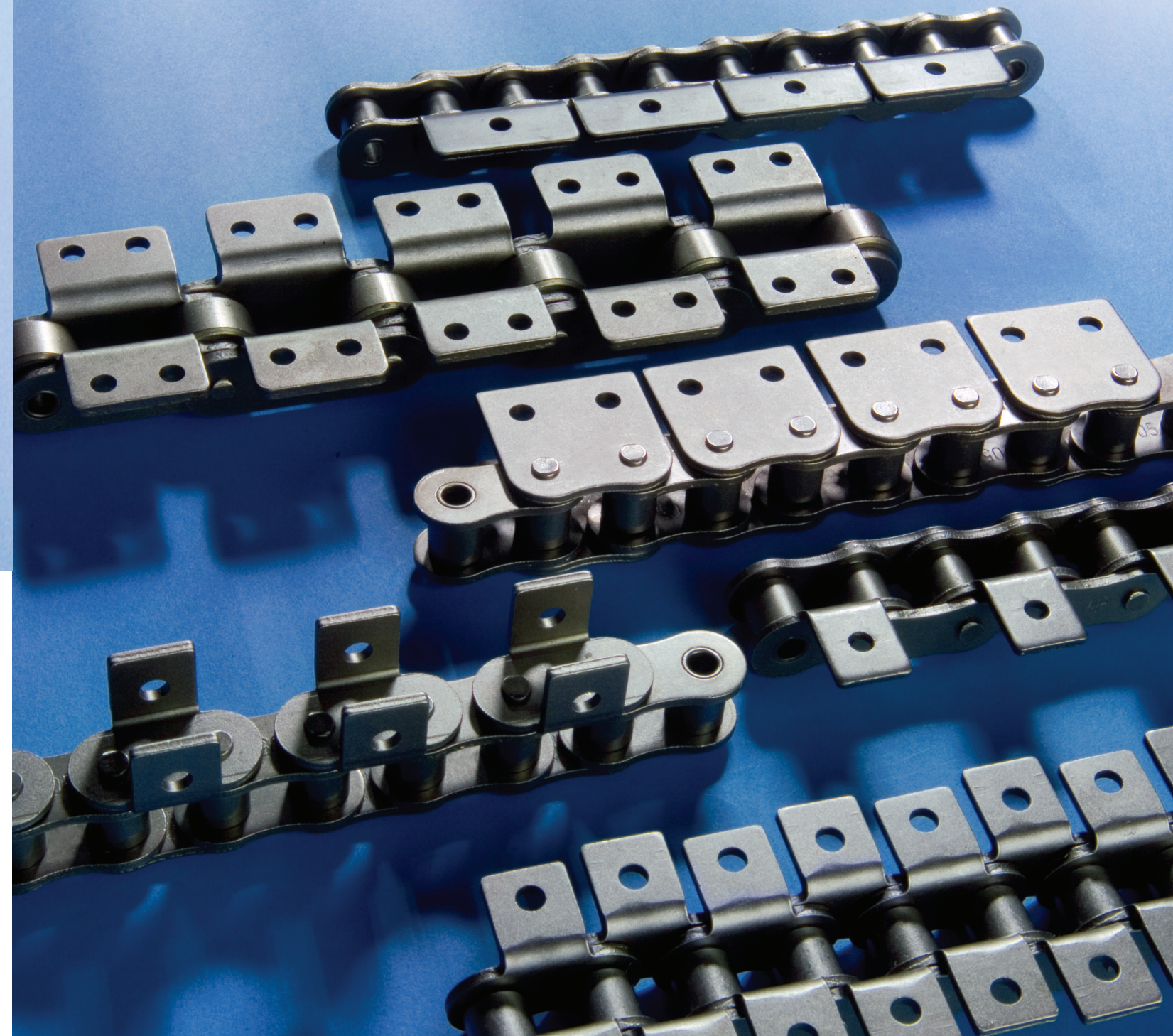
Renold invented roller chain in 1878. Jeffrey Chain has been the long-time American leader in engineering class chain. Together these names form the most complete, experienced chain company you'll ever need. We have more combined years of knowledge than you can find anywhere else in the world; more focus on creating better products, service, and support.

Experience the difference.



**RENOLD
JEFFREY**

Longer Lasting **Attachment Chain**



Corporate Headquarters

2307 Maden Drive
Morristown, TN 37813

Tel: (423) 586-1951
Tel: (800) 251-9012
Fax: (423) 581-2399

Renold Canada Montreal

22 rue De Hull
Ville La Salle
Quebec
H8R 1V9
Canada

Tel: (800) 265-9970
Fax: +1(514) 367-4993

**RENOLD
JEFFREY**

Advancing Chain Technology
www.renoldjeffrey.com

RENOLD
Canada

PTDA
Member

Renold Jeffrey Attachment Chain

The chain is as important
as the attachments

Renold Jeffrey provides an extensive offering of attachment chains suitable for virtually all applications. The base chain is the quality Renold Chain you have come to know and trust. Combine that with the speed and reliability of delivery, and you have the best package available in the industry today.

The dedicated attachment assembly department in our Morristown, Tenn., manufacturing facility is designed to meet your attachment chain needs quickly and efficiently. This gets product to your customers quickly, and helps improve their productivity. We maintain substantial inventories of components to build chain in carbon steel as well as Hydro-Service®. We also have a wide variety of stainless steel chain products available. Call Renold Jeffrey for details.



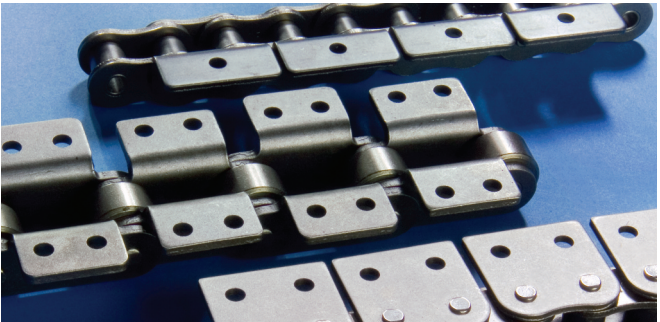
Specialty Attachment Chain

In addition to our extensive inventories of in-stock chains, Renold Jeffrey has a wide variety of specialty attachment roller chains, including wide-contour attachments, Spike Chain, Book Binding Chain, Top Roller Chain, and more. Call for information.

Program Attachment Styles				
available in all program chain sizes listed below				
Bent Lugs	A-1	A-2	K-1	K-2
Straight Lugs	SA-1	SA-2	SK-1	SK-2
Extended Pins	D-1	D-3		

Program Carbon Steel Chains				
40	50	60	80	100
C2040	C2050	C2060	C2080	
C2042	C2052	C2062	C2082	

Program Hydro-Service® Chains			
40HSC	50HSC	60HSC	80HSC
C2040HSC	C2050HSC	C2060HSC	C2080HSC



Attachment Chain

1. Choose the base chain — Carbon Steel, Hydro-Service®, or Stainless Steel.
2. Indicate chain size.
3. Specify the type of attachment.
4. Indicate attachment spacing.
For example: Every pitch, every 2nd, etc.
Evenly spaced attachments are placed on pin links unless otherwise specified.
5. Specify length of each strand.
(No. of pitches per strand)
6. Indicate how many strands.

Stock Attachment Chain

Standard Pitch

Bent Lug



A-1
1 Side, 1 Hole



K-1
Both Sides, 1 Hole

Straight Lug



SA-1
1 Side, 1 Hole

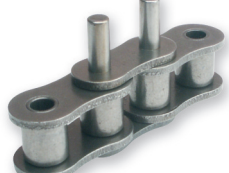


SK-1
Both Sides, 1 Hole

Extended Pin



D-1
1 Extended Pin



D-3
2 Extended Pins

Double Pitch - one-hole attachments and extended pins also available

Bent Lug



A-2
1 Side, 2 Holes

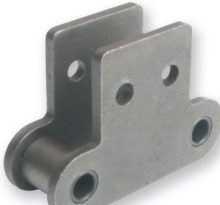


K-2
Both Sides, 2 Holes

Straight Lug



SA-2
1 Side, 2 Holes



SK-2
Both Sides, 2 Holes

**RENOLD
JEFFREY**