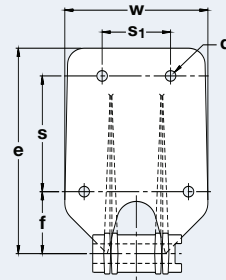
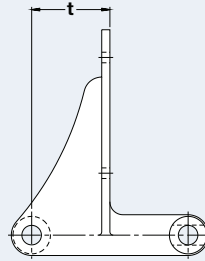


Engineering Class Cast Chain

Dimensions are in inches unless otherwise indicated.

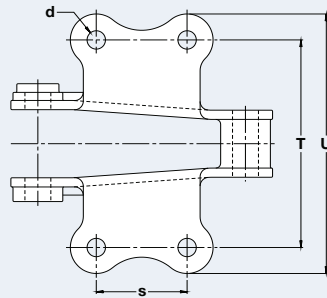
Chain No.	Pitch	Inner Width Max	Barrel Diam Max	Plate Height Max	Pin Diam Max	Pin Length Max	Average Ultimate Strength	Rated Working Load	Weight
	A	B	C	D	G	H	Lbs	Lbs	Lbs/Ft
720S	6.000	1.125	1.438	1.563	0.750	3.810	30,000	3,450	5.20
CS720S	6.000	1.125	1.438	1.563	0.750	3.810	30,000	3,450	5.40



F22-6 & F22-8 Cast Chain Attachments

Dimensions are in inches unless otherwise indicated.

Chain No.	Att. Type	d	e	f	s	s ₁	t	w
720S	F22-6	0.406	6.000	2.375	2.625	3.750	3.000	5.375
CS720S		0.406	6.000	2.375	2.625	3.750	3.000	5.375
720S	F22-8	0.406	7.875	2.375	4.500	3.750	3.000	5.500
CS720S		0.406	7.875	2.375	4.500	3.750	3.000	5.750

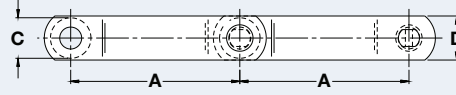
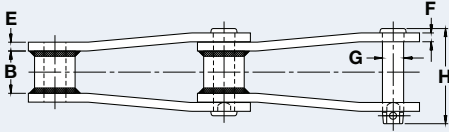


K-2 Cast Chain Attachments

Dimensions are in inches unless otherwise indicated.

Chain No.	T	U	d	h	s	w
720S	6.000	7.500	0.531	0.938	2.625	4.125
CS720S	6.000	7.500	0.531	0.938	2.625	4.125

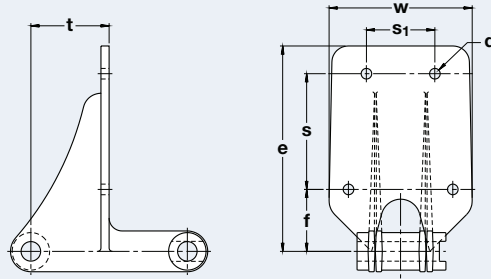
Contact Renold Jeffrey for weight specifications and for verification as dimensions are subject to change.



Engineering Class Welded Steel Chain

Dimensions are in inches unless otherwise indicated.

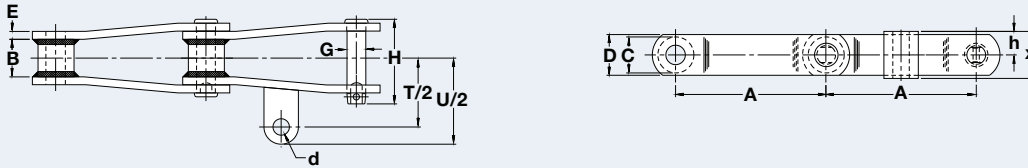
Chain No.	Pitch	Inner Width Min	Barrel Diam Max	Plate Height Max	Inner Plate Thick Max	Outer Plate Thick Max	Pin Diam Max	Pin Length Max	Average Ultimate Strength	Rated Working Load	Weight
	A	B	C	D	E	F	G	H	Lbs	Lbs	Lbs/Ft
WS720S	6.000	1.500	1.438	1.560	0.310	0.310	0.750	3.438	42,500	5,300	5.70
WS720SC	6.000	1.500	1.438	1.560	0.310	0.310	0.750	3.438	42,500	5,300	5.70
WS132P	6.050	3.375	1.750	2.000	0.500	0.500	1.000	6.170	100,000	15,300	13.50



F22-6 & F22-8 Welded Steel Chain Attachments

Dimensions are in inches unless otherwise indicated.

Chain No.	Att. Type	d	e	f	s	s ₁	t	w
WS720S	F22-6	0.406	6.000	2.375	2.625	3.750	3.000	5.000
WS720SC		0.406	6.000	2.375	2.625	3.750	3.000	5.000
WS720S	F22-8	0.406	7.875	2.375	4.500	3.750	3.000	5.000
WS720SC		0.406	7.875	2.375	4.500	3.750	3.000	5.000

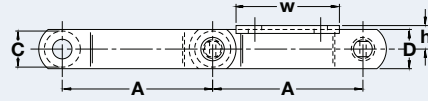
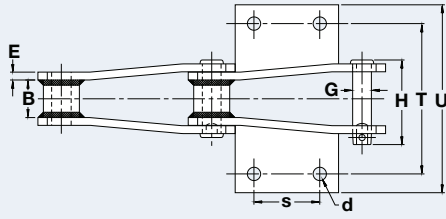


A-42 1-7/8 Welded Steel Chain Attachments

Dimensions are in inches unless otherwise indicated.

Chain No.	A	B	C	D	E	G	H	T/2	U/2	d	h	x
WS720S	6.000	1.500	1.437	1.625	0.313	0.750	3.438	2.750	3.438	0.656	0.937	1.875

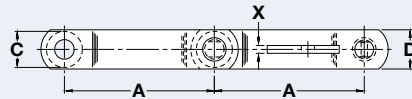
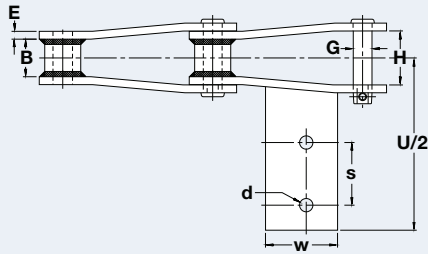
Contact Renold Jeffrey for weight specifications and for verification as dimensions are subject to change.



K-2 Welded Steel Chain Attachments

Dimensions are in inches unless otherwise indicated.

Chain No.	A	B	C	D	E	G	H	T	U	d	h	s	w
WS720S	6.000	1.500	1.438	1.562	0.313	0.750	3.438	6.000	7.500	0.531	0.938	2.625	4.125
WS132P	6.050	3.375	1.750	2.000	0.500	1.000	6.172	7.500	9.125	0.531	1.250	2.750	4.000

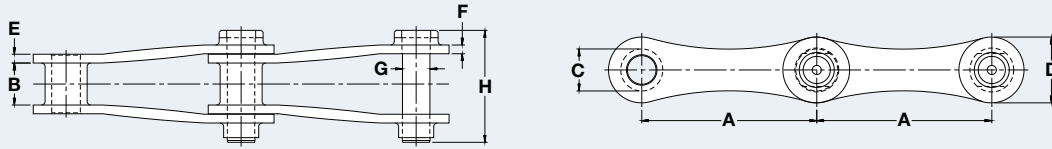


AD-474 Welded Steel Chain Attachments

Dimensions are in inches unless otherwise indicated.

Chain No.	A	B	C	D	E	G	H	U/2	X	d	s	w
WS720S	6.000	1.500	1.437	1.625	0.313	0.750	3.438	6.875	0.313	0.531	2.500	2.875

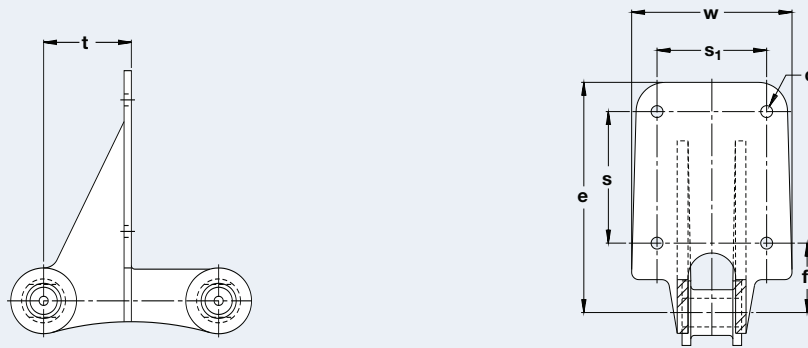
Contact Renold Jeffrey for weight specifications and for verification as dimensions are subject to change.



Engineering Class NCS Plastic Chain

Dimensions are in inches unless otherwise indicated.

Chain No.	Pitch	Inner Width Min	Barrel Diam Max	Plate Height Max	Inner Plate Thick Max	Outer Plate Thick Max	Pin Diam Max	Pin Length Max	Average Ultimate Strength	Rated Working Load	Weight
	A	B	C	D	E	F	G	H	Lbs	Lbs	Lbs/Ft
NCS720S	6.000	1.438	1.438	2.250	0.297	0.297	0.938	3.828	6,000	2,600	1.40



F22-6 & F22-8 NCS Plastic Chain Attachments

Dimensions are in inches unless otherwise indicated.

Chain No.	Att. Type	d	e	f	s	s ₁	t	w
NCS720S	F22-6	0.406	6.188	2.375	2.625	3.750	2.375	5.500
NCS720S	F22-8	0.406	7.875	2.375	4.500	3.750	2.375	5.500

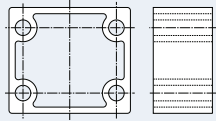
Contact Renold Jeffrey for weight specifications and for verification as dimensions are subject to change.

Water/Wastewater Treatment Chain

Components

Filler Blocks

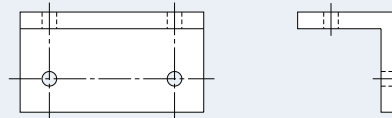
Renold Jeffrey Filler Blocks are manufactured from black polypropylene and are available for F22-6 and F22-8 Attachments.



Filler Block

Wear Shoes

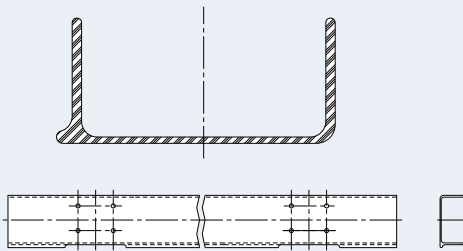
Renold Jeffrey Wear Shoes are furnished in UHMW polyethylene. Carrying Wear Shoes measure 3 x 3 x 1/2 x 5-1/2 inches. Return Wear Shoes measure 3 x 3 x 1/2 x 4-1/2 inches.



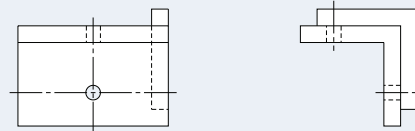
Carrying Wear Shoe

Flights

Our fiberglass Flights are C-channel type construction and measure 3 x 6 or 3 x 8 inches, as required.



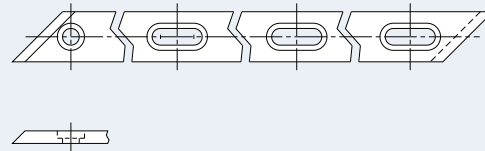
Flight



Return Wear Shoe

Wear Strips

UHMW polymer Wear Strips are made from 100-percent virgin materials. Standard thickness is 3/8 or 1/2 inch, with varying widths as required by the application.

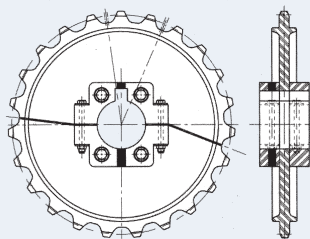


Wear Strip

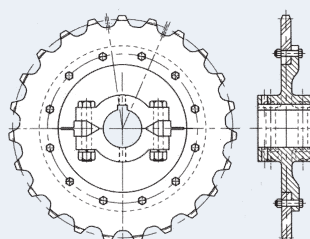
Renold Jeffrey Sprockets

Renold Jeffrey Sprockets for water/wastewater treatment applications are made from 100-percent UHMW polyethylene or a combination of cast iron hubs and UHMW tooth segments. All are split for easy installation and reversible

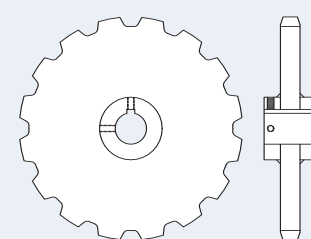
to extend wear life. Cast iron and steel-carved, flame-hardened sprockets are also available in split, combination, or solid design. Stainless steel hardware is standard.



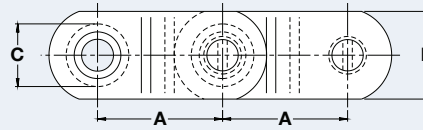
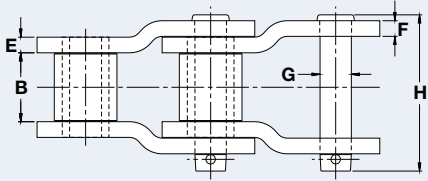
UHMW Sprocket



Combination Sprocket



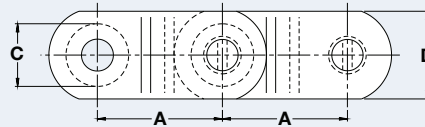
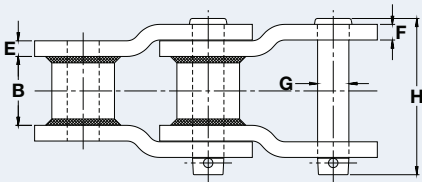
Steel-Carved and Cast Iron Sprocket



Engineering Class Drive Chain

Dimensions are in inches unless otherwise indicated.

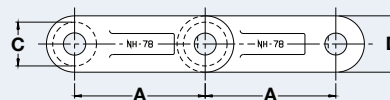
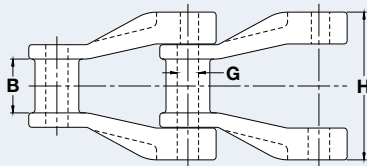
Chain No.	Pitch	Inner Width Min	Roller Diam Max	Plate Height Max	Inner Plate Thick Max	Outer Plate Thick Max	Pin Diam Max	Pin Length Max	Average Ultimate Strength	Rated Working Load	Weight
	A	B	C	D	E	F	G	H	Lbs	Lbs	Lbs/Ft
JS882	2.609	1.125	0.875	1.125	0.250	0.250	0.438	2.560	26,000	2,500	3.60



Engineering Class Welded Steel Drive Chain

Dimensions are in inches unless otherwise indicated.

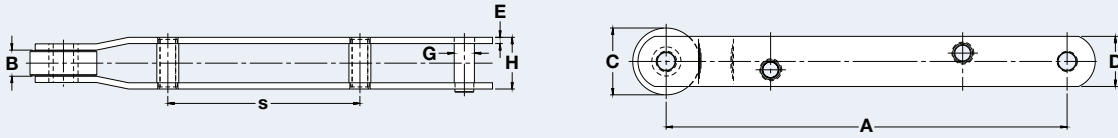
Chain No.	Pitch	Inner Width Min	Barrel Diam Max	Plate Height Max	Inner Plate Thick Max	Outer Plate Thick Max	Pin Diam Max	Pin Length Max	Average Ultimate Strength	Rated Working Load	Weight
	A	B	C	D	E	F	G	H	Lbs	Lbs	Lbs/Ft
WS78P	2.609	1.125	0.875	1.125	0.250	0.250	0.500	3.000	24,000	3,000	4.20



Engineering Class Nonmetallic Drive Chain

Dimensions are in inches unless otherwise indicated.

Chain No.	Pitch	Inner Width Min	Roller Diam Max	Plate Height Max	Pin Diam Max	Pin Length Max	Rated Working Load	Weight
	A	B	C	D	G	H	Lbs	Lbs/Ft
NH78	2.609	1.100	0.875	1.140	0.425	2.970	1,740	1.25

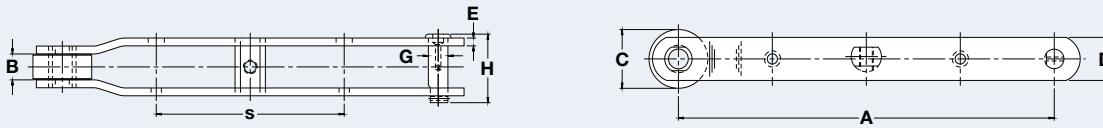


Engineering Class Style 1 Waterscreen Chain

Dimensions are in inches unless otherwise indicated.

Chain No.	Style	Pitch	Inner Width Min	Roller Diam Max	Plate Height Max	Plate Thick Max	Pin Diam Max	Pin Length Max		Average Ultimate Strength	Rated Working Load
		A	B	C	D	E	G	H	s	Lbs	Lbs
2929	1	24.000	1.563	4.000	3.000	0.375	1.210	3.190	11.500	65,900	9,700
2929H	1	24.000	1.560	4.000	3.000	0.500	1.210	3.690	11.500	88,000	10,800

Available with carbon, alloy, or stainless steel parts.

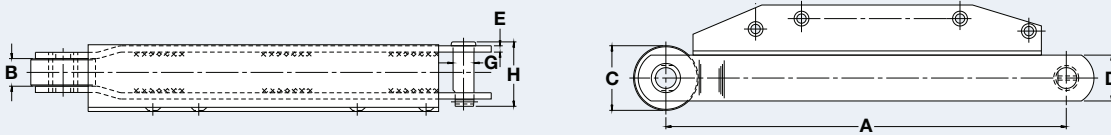


Engineering Class Style 2 Waterscreen Chain

Dimensions are in inches unless otherwise indicated.

Chain No.	Style	Pitch	Inner Width Min	Roller Diam Max	Plate Height Max	Plate Thick Max	Pin Diam Max	Pin Length Max		Average Ultimate Strength	Rated Working Load
		A	B	C	D	E	G	H	s	Lbs	Lbs
1960	2	24.000	1.656	3.750	2.750	0.375	1.250	3.870	12.000	75,000	10,500
1960H	2	24.000	1.656	3.750	2.750	0.500	1.250	4.370	12.000	100,000	11,500

Available with carbon, alloy, or stainless steel parts.



Engineering Class Style 3 Waterscreen Chain

Dimensions are in inches unless otherwise indicated.

Chain No.	Style	Pitch	Inner Width Min	Roller Diam Max	Plate Height Max	Plate Thick Max	Pin Diam Max	Pin Length Max		Average Ultimate Strength	Rated Working Load
		A	B	C	D	E	G	H		Lbs	Lbs
3260	3	24.000	1.656	3.875	2.750	0.375	1.250	3.860		56,600	10,500
3260H	3	24.000	1.656	3.875	2.750	0.500	1.250	4.360		75,500	11,500
3262	3	24.000	1.656	3.750	2.750	0.375	1.250	4.110		56,600	11,500

Available with carbon, alloy, or stainless steel parts.

Contact Renold Jeffrey for weight specifications and for verification as dimensions are subject to change.