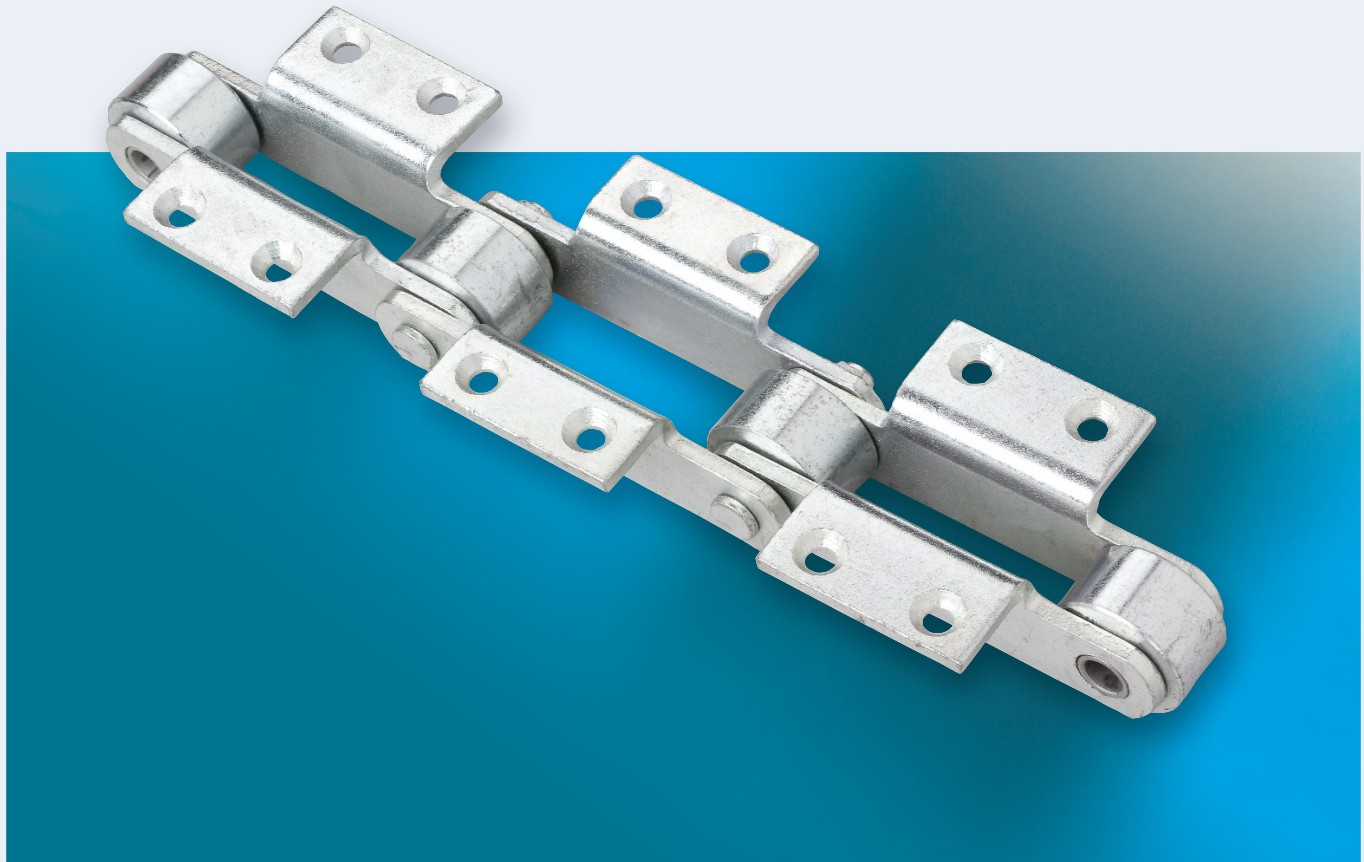


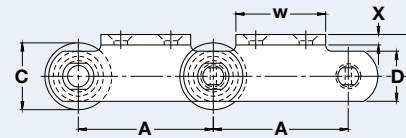
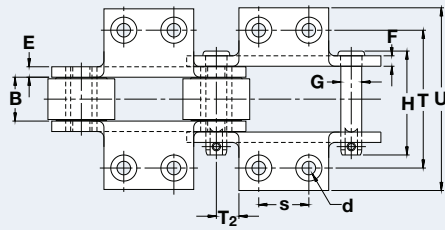
Meat Packing and Processing Chain

Polymer Bushed Roller Conveyor Chains from Renold Jeffrey are ideal for meat packing and food processing operations. These dependable chains are built to handle wet and washdown conditions for reliable, long-lasting performance.

Polymer bushed rollers, stainless steel thimbles, and plated sidebars, pins, and rollers resist corrosion and keep running. The polymer bushing material does not absorb water like some plastics, has very low friction characteristics, and will withstand hot water, steam, and detergents.

Renold Jeffrey Meat Packing and Processing Chains are furnished with K-type attachments and are available in a wide range of standard and specialized materials. Operation is consistent, smooth, and quiet; lube is not required.





Engineering Class Polymer Bushed Roller Conveyor Chain

Dimensions are in inches unless otherwise indicated.

Chain No.	Pitch	Inner Width Max	Roller Diam Max	Plate Height Max	Inner Plate Thick Max	Outer Plate Thick Max	Pin Diam Max	Pin Length Max									Rated Working Load
	A	B	C	D	E	F	G	H	T	T ₂	U	X	d	h	s	w	Lbs
5401*	4.040	1.313	2.000	1.500	0.313	0.313	0.625	3.109	4.125	1.266	5.500	0.313	0.406	1.250	1.500	2.688	3,150
5600*	6.000	1.313	2.000	1.500	0.313	0.313	0.625	3.109	4.000	2.000	5.410	0.313	0.406	1.375	2.000	3.500	3,150
5601*	6.000	1.313	2.250	1.500	0.313	0.313	0.625	3.109	4.000	2.000	5.340	0.313	0.406	1.375	2.000	3.340	3,150
5602	6.000	1.125	2.000	1.500	0.250	0.250	0.438	2.563	4.000	2.000	4.938	0.250	0.406	1.250	2.000	3.250	1,950

*Attachments have 3/16 x 90 degree countersunk holes on top of K-2 attachments

Contact Renold Jeffrey for weight specifications and for verification as dimensions are subject to change.