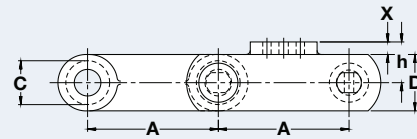
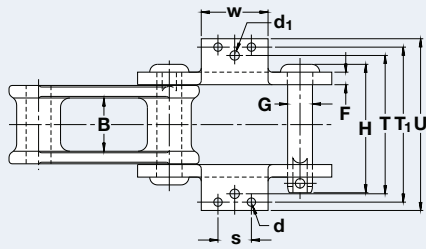


Engineering Class Cast Combination Chain

Dimensions are in inches unless otherwise indicated.

| Chain No. | Pitch | Inner Width Max | Barrel Diam Max | Plate Height Max | Plate Thick Max | Pin Diam Max | Pin Length Max | Average Ultimate Strength | Rated Working Load | Weight |
|-----------|-------|-----------------|-----------------|------------------|-----------------|--------------|----------------|---------------------------|--------------------|--------|
| | A | B | C | D | F | G | H | Lbs | Lbs | Lbs/Ft |
| C188M | 2.609 | 1.063 | 0.875 | 1.125 | 0.250 | 0.496 | 2.560 | 14,000 | 2,000 | 3.60 |
| C131 | 3.075 | 1.125 | 1.219 | 1.500 | 0.375 | 0.625 | 3.440 | 24,000 | 3,220 | 6.60 |
| C102BM | 4.000 | 2.000 | 0.969 | 1.500 | 0.375 | 0.625 | 4.205 | 29,000 | 4,350 | 6.40 |
| C102 ½M | 4.030 | 2.188 | 1.375 | 1.750 | 0.375 | 0.750 | 4.438 | 42,000 | 4,000 | 9.00 |
| C111M | 4.760 | 2.563 | 1.438 | 1.750 | 0.375 | 0.750 | 4.844 | 37,000 | 5,950 | 9.00 |
| C110M | 6.000 | 2.188 | 1.250 | 1.500 | 0.375 | 0.625 | 4.266 | 24,000 | 4,000 | 6.00 |
| C1316M | 6.000 | 1.375 | 1.250 | 1.500 | 0.313 | 0.625 | 3.265 | 30,000 | 3,220 | 5.20 |
| C133 | 6.000 | 1.438 | 0.875 | 2.000 | 0.375 | 0.875 | 3.734 | 56,000 | 6,150 | 8.40 |
| C132M | 6.050 | 3.375 | 1.719 | 2.000 | 0.500 | 1.000 | 6.141 | 50,000 | 8,330 | 13.20 |
| PW132M | 6.050 | 3.375 | 0.859 | 2.000 | 0.500 | 1.000 | 6.141 | 50,000 | 8,330 | 15.60 |

Cast Combination Chain



K-1 Cast Combination Attachments

Dimensions are in inches unless otherwise indicated.

| Chain No. | A | B | C | D | F | G | H | T | T ₁ | U | X | d | d ₁ | h | s | w | Average Ultimate Strength | Rated Working Load |
|-----------|-------|-------|-------|-------|-------|-------|-------|---|----------------|-------|-------|---|----------------|-------|---|-------|---------------------------|--------------------|
| | | | | | | | | | | | | | | | | | Lbs | Lbs/Ft |
| C188M | 2.609 | 1.063 | 0.875 | 1.125 | 0.250 | 0.496 | 2.560 | — | 3.750 | 5.125 | 0.250 | — | 0.375 | 0.813 | — | 2.125 | 14,000 | 2,000 |
| C131 | 3.075 | 1.125 | 1.219 | 1.500 | 0.375 | 0.625 | 3.438 | — | 4.094 | 5.250 | 0.375 | — | 0.375 | 0.938 | — | 2.563 | 24,000 | 3,220 |
| C102BM | 4.000 | 2.000 | 0.969 | 1.500 | 0.375 | 0.625 | 4.205 | — | 4.750 | 6.313 | 0.375 | — | 0.375 | 1.000 | — | 2.750 | 29,000 | 4,350 |

K-2 Cast Combination Attachments

Dimensions are in inches unless otherwise indicated.

| Chain No. | A | B | C | D | F | G | H | T | T ₁ | U | X | d | d ₁ | h | s | w | Average Ultimate Strength | Rated Working Load |
|-----------|-------|-------|-------|-------|-------|-------|-------|-------|----------------|-------|-------|-------|----------------|-------|-------|-------|---------------------------|--------------------|
| | | | | | | | | | | | | | | | | | Lbs | Lbs/Ft |
| C188M | 2.609 | 1.063 | 0.875 | 1.125 | 0.250 | 0.496 | 2.560 | 4.188 | — | 5.125 | 0.250 | 0.313 | — | 0.813 | 1.250 | 2.125 | 14,000 | 2,000 |
| C131 | 3.075 | 1.125 | 1.219 | 1.500 | 0.375 | 0.625 | 3.438 | 4.094 | — | 5.250 | 0.375 | 0.500 | — | 0.938 | 1.500 | 2.563 | 24,000 | 3,220 |
| C102BM | 4.000 | 2.000 | 0.969 | 1.500 | 0.375 | 0.625 | 4.205 | 5.313 | — | 6.313 | 0.375 | 0.375 | — | 1.000 | 1.750 | 2.750 | 29,000 | 4,350 |
| C102 ½M | 4.030 | 2.188 | 1.375 | 1.750 | 0.375 | 0.750 | 4.438 | 5.375 | — | 6.469 | 0.375 | 0.375 | — | 1.125 | 1.750 | 2.719 | 42,000 | 4,000 |
| C111M | 4.760 | 2.563 | 1.438 | 1.750 | 0.375 | 0.750 | 4.844 | 6.250 | — | 7.406 | 0.375 | 0.500 | — | 1.125 | 2.313 | 3.938 | 37,000 | 5,950 |
| C110M | 6.000 | 2.188 | 1.250 | 1.500 | 0.375 | 0.625 | 4.266 | 5.313 | — | 6.313 | 0.375 | 0.375 | — | 1.000 | 1.750 | 3.250 | 24,000 | 4,000 |
| C1316M | 6.000 | 1.375 | 1.250 | 1.500 | 0.313 | 0.625 | 3.265 | 5.125 | — | 7.125 | 0.313 | 0.500 | — | 1.500 | 3.000 | 3.375 | 30,000 | 3,220 |
| C132M | 6.050 | 3.375 | 1.719 | 2.000 | 0.500 | 1.000 | 6.141 | 7.500 | — | 9.125 | 0.500 | 0.500 | — | 1.250 | 2.750 | 3.938 | 50,000 | 8,330 |

Attachment dimensions shown above are for outside steel attachments. Contact Renold Jeffrey for special attachments not shown.

Contact Renold Jeffrey for weight specifications and for verification as dimensions are subject to change.