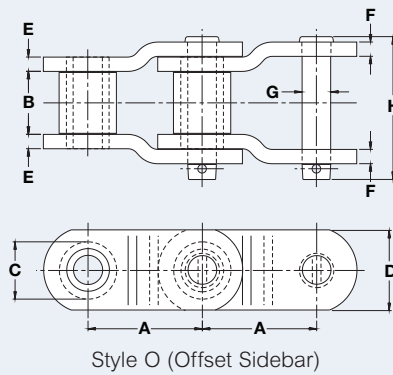
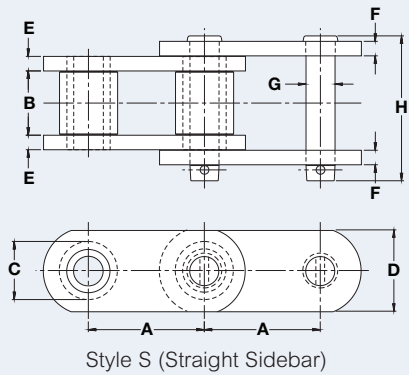


## 2.6 – 6.0



Style S (Straight Sidebar)

Style O (Offset Sidebar)

### Engineering Class Conveyor Chain — 2.609 to 6.000 Pitch

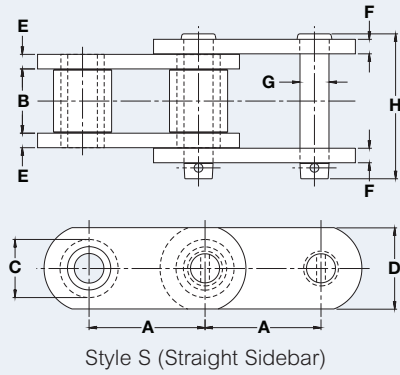
Dimensions are in inches unless otherwise indicated.

Chain No.	Sidebar Style	Pitch	Inner Width Max	Roller Diam Max	Plate Height Max	Inner Plate Thick Max	Outer Plate Thick Max	Pin Diam Max	Pin Length Max	Average Ultimate Strength	Rated Working Load	Weight
			A	B	C	D	E	F	G	H	Lbs	Lbs
81X	S	2.609	1.062	0.906	1.125	0.156	0.156	0.438	2.078	25,000	*	2.40
81XH	S	2.609	1.062	0.906	1.265	0.313	0.219	0.438	2.531	40,000	*	3.50
81XHH	S	2.609	1.062	0.906	1.265	0.313	0.219	0.438	1.265	42,000	*	4.60
1583C	S	3.000	1.000	1.500	1.125	0.188	0.188	0.438	2.219	14,200	2,110	4.10
5635C	S	3.000	1.250	1.500	1.250	0.250	0.250	0.500	2.730	23,000	3,000	5.60
1588	S	4.000	1.125	1.750	1.125	0.188	0.188	0.438	2.280	13,000	2,100	3.30
1520C	S	4.000	1.000	1.500	1.125	0.188	0.188	0.438	2.219	13,000	2,110	3.80
1400M	S	4.000	1.313	2.000	1.375	0.188	0.188	0.500	2.547	17,800	2,950	5.60
SS4	S	4.000	0.906	1.500	1.250	0.250	0.250	0.500	2.360	19,000	2,450	4.70
1594	S	4.000	1.125	2.000	1.375	0.188	0.188	0.438	2.280	21,000	2,300	5.30
149M	S	4.000	1.250	2.250	1.500	0.375	0.375	0.625	3.300	37,500	4,370	12.00
1297M	S	4.040	1.250	2.000	1.500	0.375	0.375	0.625	3.280	37,770	4,375	8.90
1406M	S	6.000	1.313	2.000	1.375	0.188	0.188	0.500	2.550	17,800	2,750	5.20
IS6018	S	6.000	1.125	2.000	1.500	0.250	0.250	0.438	2.563	18,000	2,500	2.63
1823R	S	6.000	1.250	2.000	1.500	0.250	0.250	0.563	2.810	21,000	3,400	5.60
1514	S	6.000	1.250	2.000	1.500	0.313	0.313	0.625	3.190	26,000	4,100	6.30
2190	S	6.000	1.250	2.500	1.500	0.250	0.250	0.563	2.810	26,000	3,400	6.60
1126	O	6.000	1.250	2.250	1.500	0.375	0.375	0.625	3.375	28,000	4,380	7.50
1126CM	O	6.000	1.250	3.000	1.500	0.375	0.375	0.625	3.300	28,000	4,380	9.40
SS46M	S	6.000	1.500	1.250	1.500	0.313	0.313	0.625	3.300	28,000	6,000	5.40
IS6022R	S	6.000	1.250	2.500	1.500	0.250	0.250	0.563	2.810	36,000	3,550	5.60
1212M	S	6.000	1.250	2.250	1.500	0.375	0.375	0.625	3.406	37,700	4,370	8.00
1706M	S	6.000	1.343	2.500	2.000	0.375	0.375	0.750	3.470	38,000	5,600	11.00
1258R	S	6.000	1.625	3.000	2.000	0.250	0.250	0.625	3.200	40,000	4,600	9.60
1906M	S	6.000	1.344	3.000	2.000	0.375	0.375	0.750	3.470	55,000	5,600	12.20
2184PR	O	6.000	1.375	3.000	2.000	0.375	0.375	0.870	3.610	55,000	6,500	12.30
1806M	O	6.000	1.344	2.500	2.000	0.375	0.375	0.750	3.470	59,500	5,500	11.10
1905M	S	6.000	2.000	3.000	2.000	0.375	0.375	0.750	4.250	59,500	7,200	22.70
2008DP	S	6.000	1.562	1.875	2.000	0.375	0.375	0.750	3.844	63,000	6,050	12.00
951M	S	6.000	1.250	3.000	2.000	0.375	0.375	0.625	3.300	63,500	4,380	12.20
1007DP	S	6.000	1.563	2.750	2.750	0.375	0.375	0.750	3.844	70,000	6,070	11.80
2110PB	S	6.000	1.688	2.750	2.250	0.375	0.375	0.875	3.953	76,000	7,400	16.42
2178A	S	6.000	1.563	2.750	2.250	0.375	0.375	0.875	3.830	85,000	7,080	13.20
2184AC	O	6.000	1.375	3.000	2.000	0.375	0.375	0.875	3.625	85,000	6,500	12.30
2198AR	S	6.000	1.563	2.750	2.250	0.500	0.500	0.875	4.420	135,000	8,900	14.20

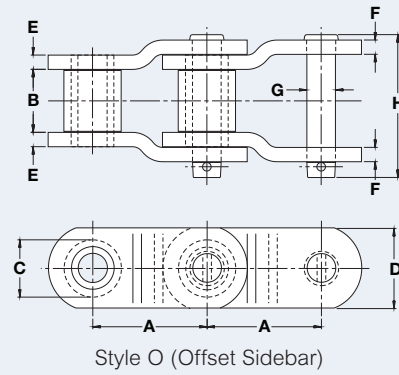
\*Contact Renold Jeffrey for Rated Working Loads.

# Engineering Class Conveyor Chain

## 8.0 – 9.0



Style S (Straight Sidebar)



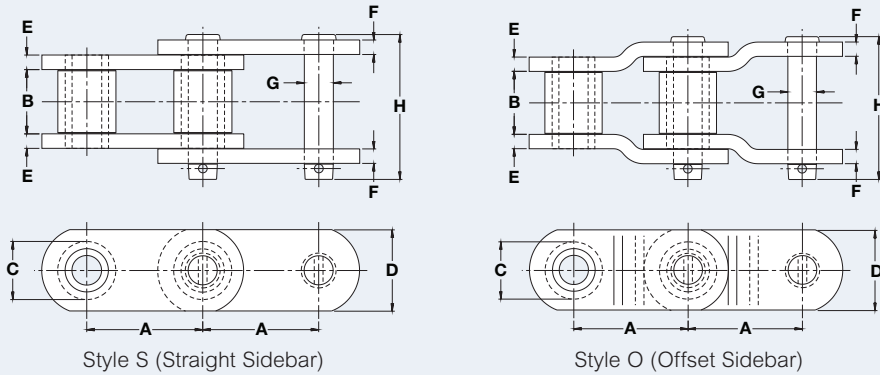
Style O (Offset Sidebar)

### Engineering Class Conveyor Chain — 8.000 to 9.000 Pitch

Dimensions are in inches unless otherwise indicated.

Chain No.	Sidebar Style	Pitch	Inner Width Max	Roller Diam Max	Plate Height Max	Inner Plate Thick Max	Outer Plate Thick Max	Pin Diam Max	Pin Length Max	Average Ultimate Strength	Rated Working Load	Weight
		A	B	C	D	E	F	G	H	Lbs	Lbs	Lbs/Ft
2800PB	S	8.000	1.813	3.500	2.750	0.500	0.500	1.000	4.703	125,000	9,800	18.90
1709	S	9.000	1.625	3.000	2.000	0.250	0.250	0.625	3.250	26,000	4,300	8.00
IS911	S	9.000	1.500	3.000	2.000	0.313	0.313	0.625	3.390	29,000	4,600	8.50
809M	S	9.000	2.031	3.500	2.500	0.250	0.250	0.750	3.656	33,000	5,500	13.00
922M	S	9.000	2.000	3.500	2.000	0.375	0.375	0.750	4.125	41,000	7,200	13.90
1730M	S	9.000	1.750	1.875	2.500	0.375	0.375	0.875	3.938	56,000	9,200	14.90
1751M	S	9.000	2.000	3.500	2.000	0.375	0.375	0.750	4.125	59,500	7,200	15.80
932M	S	9.000	2.000	4.000	2.000	0.375	0.375	0.750	4.125	59,500	7,200	19.80
933M	S	9.000	2.250	4.000	2.500	0.375	0.375	0.875	4.438	80,500	9,200	19.50
944	S	9.000	2.625	5.000	2.500	0.500	0.500	1.000	5.391	93,000	12,700	30.80
3252PR	S	9.000	2.625	3.000	2.500	0.500	0.500	1.000	5.328	116,000	12,650	17.80
4035PB	S	9.000	3.156	3.500	3.000	0.500	0.500	1.125	6.080	131,700	16,400	26.30
1952R	S	9.000	3.000	4.250	3.500	0.625	0.625	1.503	6.500	150,000	22,300	45.50
4065	S	9.000	3.063	4.250	3.500	0.625	0.625	1.250	6.484	215,000	19,000	35.50
4037PB	S	9.000	3.250	4.500	4.000	0.625	0.625	1.500	7.000	253,000	27,000	49.50

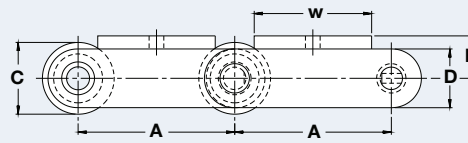
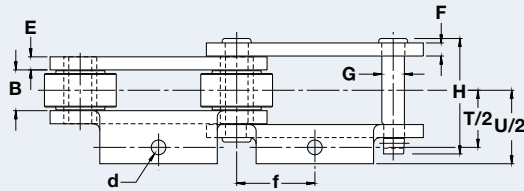
## 12.0 – 24.0



### Engineering Class Conveyor Chain — 12.000 to 24.000 Pitch

Dimensions are in inches unless otherwise indicated.

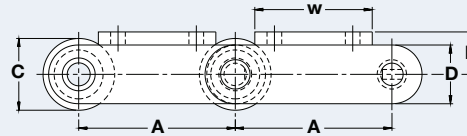
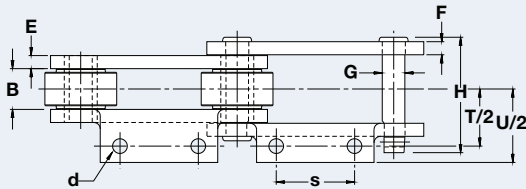
Chain No.	Sidebar Style	Pitch	Inner Width Max	Roller Diam Max	Plate Height Max	Inner Plate Thick Max	Outer Plate Thick Max	Pin Diam Max	Pin Length Max	Average Ultimate Strength	Rated Working Load	Weight
		A	B	C	D	E	F	G	H	Lbs	Lbs	Lbs/Ft
1211M	S	12.000	1.500	3.000	2.000	0.313	0.313	0.625	3.469	29,000	4,650	7.50
1743M	S	12.000	1.625	3.250	2.000	0.375	0.375	0.750	3.938	55,000	6,250	9.50
1743 ½M	S	12.000	1.625	3.250	2.500	0.375	0.375	0.750	3.875	63,000	6,250	11.50
1222M	S	12.000	2.000	3.500	2.000	0.375	0.375	0.750	4.090	59,500	7,200	11.30
1322M	S	12.000	2.000	3.500	2.000	0.375	0.375	0.750	4.125	59,500	7,200	10.90
276M	S	12.000	2.063	4.000	2.500	0.313	0.313	0.750	3.940	68,000	7,200	12.50
1233M	S	12.000	2.250	4.000	2.500	0.375	0.375	0.875	4.450	70,000	9,200	15.40
2031M	S	12.000	2.250	3.000	2.500	0.375	0.375	0.875	4.420	75,000	9,100	12.00
1095	S	12.000	2.500	4.000	2.500	0.375	0.375	0.875	4.750	75,450	9,950	15.50
2823P	O	12.000	1.938	1.750	2.000	0.500	0.500	0.875	4.610	79,000	9,000	9.18
2573S	O	12.000	2.250	1.750	2.750	0.375	0.375	0.875	4.391	85,000	9,800	14.00
3244	S	12.000	2.620	5.000	2.500	0.500	0.500	1.000	5.330	93,000	12,500	25.00
1244R	S	12.000	2.500	5.000	2.500	0.500	0.500	1.000	5.270	94,000	14,000	27.00
2073M	O	12.000	2.750	2.500	3.500	0.625	0.625	1.250	5.980	187,000	17,500	23.10
2373	O	12.000	4.125	3.250	3.500	0.625	0.625	1.625	7.781	215,000	30,000	33.90
1773	S	12.000	1.750	1.875	2.500	0.375	0.375	0.875	3.891	56,000	9,200	15.20
1831	S	18.000	2.000	3.500	2.000	0.375	0.375	0.750	4.160	41,000	7,200	9.00
1822M	S	18.000	2.000	3.500	2.000	0.375	0.375	0.750	4.125	41,000	7,200	9.00
1833R	S	18.000	2.250	4.000	2.500	0.375	0.375	0.875	4.450	70,500	9,200	12.00
1844R	S	18.000	2.500	5.000	2.500	0.500	0.500	1.000	5.270	74,000	12,300	17.00
1855	S	18.000	2.750	6.000	3.000	0.625	0.625	1.250	6.250	115,000	17,500	26.50
1866M	S	18.000	3.000	6.000	3.500	0.625	0.625	1.500	7.062	150,000	22,300	32.00
2444	S	24.000	2.500	5.000	2.500	0.500	0.500	1.000	5.313	74,000	12,700	15.00
2466	S	24.000	3.000	6.000	3.500	0.625	0.625	1.500	7.062	150,000	22,300	27.50



## A-1 Conveyor Chain Attachments

Dimensions are in inches unless otherwise indicated.

Chain No.	A	B	C	D	E	F	G	H	T/2	U/2	d	f	h	w
149M	4.000	1.250	2.250	0.500	0.375	0.375	0.625	3.375	2.000	3.000	0.531	2.000	1.250	2.000
1520C	4.000	1.000	1.500	1.125	0.188	0.188	0.438	2.219	1.375	2.109	0.375	2.000	0.813	3.000
1212M	6.000	1.250	2.250	1.500	0.375	0.375	0.625	3.406	2.250	3.156	0.438	3.000	1.250	3.000
1906M	6.000	1.344	3.000	2.000	0.375	0.375	0.750	3.531	2.063	3.563	0.563	3.000	1.625	3.000

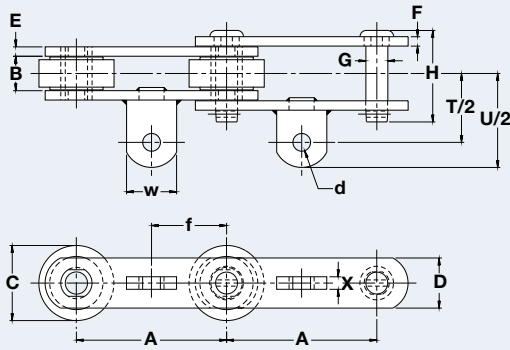


## A-2 Conveyor Chain Attachments

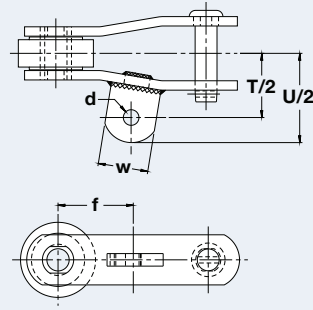
Dimensions are in inches unless otherwise indicated.

Chain No.	A	B	C	D	E	F	G	H	T/2	U/2	d	h	s	w
1583C	3.000	1.000	1.500	1.125	0.188	0.188	0.438	2.219	1.469	2.125	0.250	0.813	1.063	2.000
5635C	3.000	1.250	1.500	1.250	0.250	0.250	0.500	2.703	1.875	2.656	0.406	1.000	1.250	2.000
1588	4.000	1.125	1.750	1.125	0.188	0.188	0.438	2.344	2.000	2.625	0.375	1.000	2.000	2.938
1594	4.000	1.125	2.000	1.313	0.188	0.188	0.438	2.344	2.000	2.625	0.375	1.125	2.000	3.375
1400M	4.000	1.313	2.000	1.313	0.188	0.188	0.500	2.563	1.625	2.062	0.313	1.375	1.250	2.750
1520C	4.000	1.000	1.500	1.125	0.188	0.188	0.438	2.219	1.375	2.125	0.313	0.813	1.188	3.000
SS4	4.000	0.906	1.500	1.250	0.250	0.250	0.500	2.406	1.375	2.094	0.375	0.875	1.500	2.500
1297M	4.040	1.250	2.000	1.500	0.375	0.375	0.625	3.375	2.063	2.625	0.406	1.250	1.500	2.688
1258R	6.000	1.625	3.000	2.000	0.250	0.250	0.625	3.172	2.313	3.188	0.406	1.313	2.000	3.938
1706M	6.000	1.344	2.500	2.000	0.375	0.375	0.750	3.531	2.125	2.750	0.500	1.625	2.625	4.031
1823R	6.000	1.250	2.000	1.500	0.250	0.250	0.563	2.813	2.000	2.500	0.406	1.125	2.000	3.250
1906M	6.000	1.344	3.000	2.000	0.375	0.375	0.750	3.469	2.125	2.922	0.562	1.625	2.625	4.031
951M	6.000	1.250	3.000	2.000	0.375	0.375	0.625	3.297	2.190	2.890	0.406	1.310	2.000	3.810
IS6018	6.000	1.125	2.000	1.500	0.250	0.250	0.438	2.563	2.000	2.469	0.375	1.250	2.000	3.250
IS6022R	6.000	1.250	2.500	1.500	0.250	0.250	0.563	2.875	2.000	2.750	0.375	1.125	2.000	3.250
922M	9.000	2.000	3.500	2.000	0.375	0.375	0.750	4.156	2.500	3.188	0.531	2.500	3.500	6.188

Contact Renold Jeffrey for weight specifications and for verification as dimensions are subject to change.



Style S (Straight Sidebar)



Style O (Offset Sidebar)

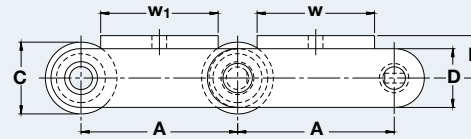
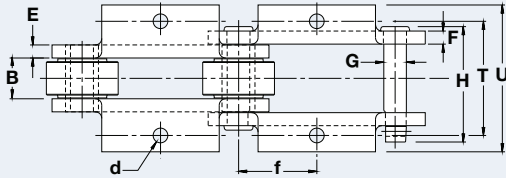
## A-42 Conveyor Chain Attachments

Dimensions are in inches unless otherwise indicated.

Chain No.	Sidebar Style	A	B	C	D	E	F	G	H	T/2	U/2	X	d	f	w
1583C	S	3.000	1.000	1.500	1.125	0.188	0.188	0.438	2.219	1.563	2.156	0.250	0.375	1.500	1.250
1594	S	4.000	1.125	2.000	1.313	0.188	0.188	0.438	2.344	3.000	3.469	0.250	0.406	2.000	1.250
149M	S	4.000	1.250	2.250	1.500	0.375	0.375	0.625	3.375	2.375	3.125	0.375	0.500	2.000	1.500
1520C	S	4.000	1.000	1.500	1.125	0.188	0.188	0.438	2.218	1.625	2.250	0.375	0.406	2.000	1.250
SS4	S	4.000	0.906	1.500	1.250	0.250	0.250	0.500	2.406	2.250	3.000	0.250	0.563	2.000	1.500
1297M	S	4.040	1.250	2.000	1.500	0.375	0.375	0.625	3.375	2.375	3.313	0.500	0.656	2.016	2.000
1126	O	6.000	1.250	2.250	1.500	0.375	0.375	0.625	3.469	2.688	3.375	0.438	0.625	2.813	1.500
1514	S	6.000	1.250	2.000	1.500	0.313	0.313	0.625	3.188	3.500	4.141	0.375	0.531	3.000	2.000
1007DP	S	6.000	1.563	2.750	2.000	0.375	0.375	0.750	3.813	2.844	3.594	0.375	0.625	3.000	1.500
1126CM	O	6.000	1.250	3.000	1.500	0.375	0.375	0.625	3.469	2.688	3.375	0.438	0.625	2.813	1.500
1212M	S	6.000	1.250	2.250	1.500	0.375	0.375	0.625	3.469	2.375	3.125	0.438	0.625	3.000	1.500
1706M	S	6.000	1.344	2.500	2.000	0.375	0.375	0.750	3.531	2.438	3.313	0.500	0.656	3.000	2.000
1823R	S	6.000	1.250	2.000	1.500	0.250	0.250	0.563	2.875	2.343	3.157	0.500	0.688	3.000	2.000
2184PR	O	6.000	1.375	3.000	2.000	0.375	0.375	0.875	3.625	2.563	3.563	0.500	0.625	3.000	2.000
IS6018	S	6.000	1.125	2.000	1.500	0.250	0.250	0.438	2.563	2.016	2.813	0.375	0.625	3.000	2.000

Contact Renold Jeffrey for weight specifications and for verification as dimensions are subject to change.

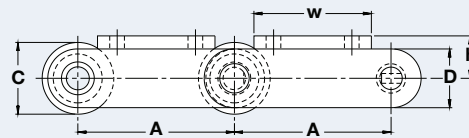
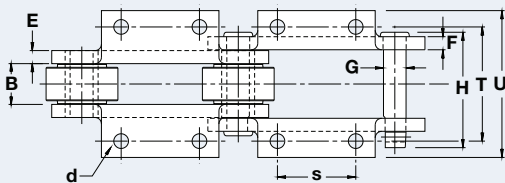
# Engineering Class Conveyor Chain



## K-1 Conveyor Chain Attachments

Dimensions are in inches unless otherwise indicated.

Chain No.	A	B	C	D	E	F	G	H	T	U	d	f	h	w	w <sub>1</sub>
1583C	3.000	1.000	1.500	1.125	0.188	0.188	0.438	2.219	2.936	4.250	0.313	1.500	0.813	2.000	2.000
149M	4.000	1.250	2.250	1.500	0.375	0.375	0.625	3.375	4.375	6.000	0.500	2.000	1.250	2.000	2.000
1588	4.000	1.125	1.750	1.125	0.188	0.188	0.438	2.344	3.436	5.250	0.375	2.000	1.000	2.938	2.938
1594	4.000	1.125	2.000	1.313	0.188	0.188	0.438	2.344	4.000	5.250	0.375	2.000	1.125	3.375	3.375
1520C	4.000	1.000	1.500	1.125	0.188	0.188	0.438	2.219	2.750	4.219	0.375	2.000	0.813	3.000	3.000
SS4	4.000	0.906	1.500	1.250	0.250	0.250	0.500	2.406	2.750	3.688	0.375	2.000	0.875	2.500	2.500
1706M	6.000	1.344	2.500	2.000	0.375	0.375	0.750	3.531	4.250	5.500	0.500	3.000	1.625	4.031	4.031
2110PB	6.000	1.688	2.750	2.250	0.375	0.375	0.875	3.953	5.124	6.688	0.688	3.000	1.500	3.875	4.250
IS6018	6.000	1.125	2.000	1.500	0.250	0.250	0.438	2.563	4.000	4.938	0.375	3.000	1.250	3.250	3.250

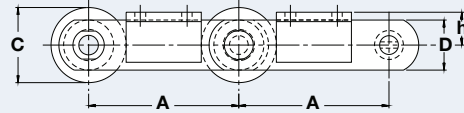
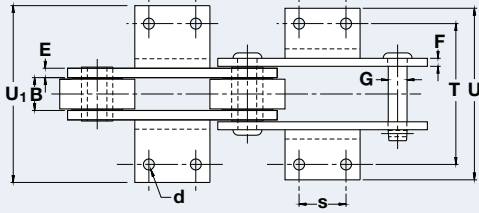


## K-2 Conveyor Chain Attachments

Dimensions are in inches unless otherwise indicated.

Chain No.	A	B	C	D	E	F	G	H	T	U	d	h	w	s
1583C	3.000	1.000	1.500	1.125	0.188	0.188	0.438	2.219	2.938	4.250	0.250	0.813	2.000	1.063
1588	4.000	1.125	1.750	1.125	0.188	0.188	0.438	2.344	4.000	5.250	0.375	1.000	2.938	2.000
1594	4.000	1.125	2.000	1.313	0.188	0.188	0.438	2.344	4.000	5.250	0.375	1.125	3.375	2.000
1400M	4.000	1.313	2.000	1.313	0.188	0.188	0.500	2.563	3.250	4.125	0.313	1.375	2.750	1.250
1520C	4.000	1.000	1.500	1.125	0.188	0.188	0.438	2.219	2.750	4.250	0.313	0.813	3.000	1.188
SS4	4.000	0.906	1.500	1.250	0.250	0.250	0.500	2.406	2.750	4.188	0.375	0.875	2.500	1.500
1706M	6.000	1.344	2.500	2.000	0.375	0.375	0.750	3.531	4.250	5.500	0.500	1.625	4.031	2.625
1906M	6.000	1.344	3.000	2.000	0.375	0.375	0.750	3.469	4.250	5.719	0.625	1.625	4.031	2.625
IS6018	6.000	1.125	2.000	1.500	0.250	0.250	0.438	2.563	4.000	4.938	0.375	1.250	3.250	2.000
IS6022R	6.000	1.250	2.500	1.500	0.250	0.250	0.563	2.875	4.000	5.500	0.375	1.125	3.250	2.000
922M	9.000	2.000	3.500	2.000	0.375	0.375	0.750	4.156	5.000	6.375	0.531	2.500	6.188	3.500

Contact Renold Jeffrey for weight specifications and for verification as dimensions are subject to change.



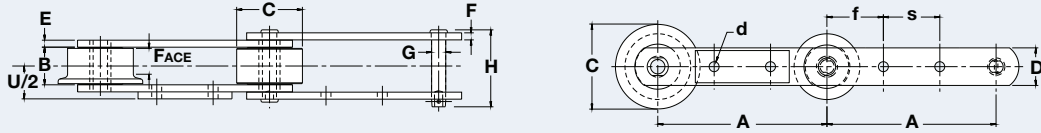
## K-2½ Conveyor Chain Attachments

Dimensions are in inches unless otherwise indicated.

Chain No.	A	B	C	D	E	F	G	T	U	U <sub>1</sub>	d	h	s
1514	6.000	1.250	2.000	1.500	0.313	0.313	0.625	4.625	6.531	6.875	0.563	1.250	2.250
1258R	6.000	1.625	3.000	2.000	0.250	0.250	0.625	4.625	5.625	6.125	0.375	1.313	3.250
951M	6.000	1.250	3.000	2.000	0.375	0.375	0.625	4.375	5.750	6.000	0.375	1.313	3.500
1709	9.000	1.625	3.000	2.000	0.250	0.250	0.625	4.625	6.625	6.125	0.500	1.750	5.000
809M	9.000	2.031	3.500	2.500	0.250	0.250	1.000	5.031	7.031	6.531	0.500	2.500	5.500
922M	9.000	2.000	3.500	2.000	0.375	0.375	0.750	5.000	6.500	6.750	0.500	2.500	5.500
933M	9.000	2.250	4.000	2.500	0.375	0.375	0.875	6.125	7.750	8.000	0.500	2.750	5.500
IS911	9.000	1.500	3.000	2.000	0.313	0.313	0.625	4.375	5.750	6.000	0.375	1.750	6.500
276M	12.000	2.063	4.000	2.500	0.313	0.313	0.750	6.063	8.313	7.688	0.500	2.750	8.000
1095	12.000	2.500	4.000	2.500	0.375	0.375	0.875	7.750	10.000	10.250	0.750	1.750	5.500
1211M	12.000	1.500	3.000	2.000	0.313	0.313	0.625	5.125	6.750	7.125	0.500	1.750	8.000
1233M	12.000	2.250	4.000	2.500	0.375	0.375	0.875	6.000	7.750	8.000	0.500	2.875	8.000

Contact Renold Jeffrey for weight specifications and for verification as dimensions are subject to change.

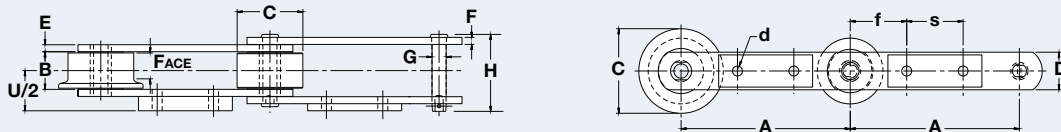
# Engineering Class Conveyor Chain



## G-16 Conveyor Chain Attachments

Dimensions are in inches unless otherwise indicated.

Chain No.	A	B	C	D	E	F	G	H	U/2	d	f	s	FACE
1258R	6.000	1.625	3.000	2.000	0.250	0.250	0.625	3.250	1.313	0.500	2.250	1.500	1.094
1709	9.000	1.625	3.000	2.000	0.250	0.250	0.625	3.344	1.313	0.500	3.000	3.000	1.094
809M	9.000	2.031	3.500	2.500	0.250	0.250	0.750	3.781	1.516	0.500	3.000	3.000	1.375
922M	9.000	2.000	3.500	2.000	0.375	0.375	0.750	4.156	1.750	0.500	3.000	3.000	1.375
933M	9.000	2.250	4.000	2.500	0.375	0.375	0.875	4.469	1.906	0.500	3.250	2.500	1.500
IS911	9.000	1.500	3.000	2.000	0.313	0.313	0.625	3.438	1.391	0.500	3.125	2.750	—
3244	12.000	2.625	5.000	2.500	0.500	0.500	1.000	5.297	2.313	0.688	4.125	3.750	1.938
1222M	12.000	2.000	3.500	2.000	0.375	0.375	0.750	4.250	1.750	0.500	4.125	3.750	1.375
1743½M	12.000	1.625	3.250	2.500	0.375	0.375	0.750	3.938	1.563	0.500	4.125	3.750	—
1743M	12.000	1.625	3.250	2.000	0.375	0.375	0.750	3.938	1.563	0.500	4.125	3.750	—



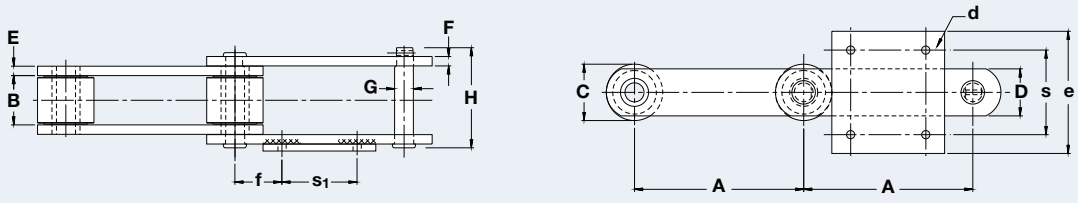
## G-16A Conveyor Chain Attachments

Dimensions are in inches unless otherwise indicated.

Chain No.	A	B	C	D	E	F	G	H	U/2	d	f	s	FACE
1211M	12.000	1.500	3.000	2.000	0.313	0.313	0.625	3.469	1.875	0.500	4.125	3.750	—
1222M	12.000	2.000	3.500	2.000	0.375	0.375	0.750	4.250	2.250	0.625	4.125	3.750	1.375
1233M	12.000	2.250	4.000	2.500	0.375	0.375	0.875	4.469	2.375	0.625	4.125	3.750	1.500
1244R	12.000	2.500	5.000	2.500	0.500	0.500	1.000	5.313	2.750	0.625	3.500	4.000	1.625
1322M	12.000	2.000	3.500	2.000	0.375	0.375	0.750	4.250	2.250	0.625	4.125	3.750	—
1822M	18.000	2.000	3.500	2.000	0.375	0.375	0.750	4.156	2.250	0.625	5.000	—	1.375
1831	18.000	2.000	3.500	2.000	0.375	0.375	0.750	4.250	2.250	0.500	5.000	—	—
1833R	18.000	2.250	4.000	2.500	0.375	0.375	0.875	4.531	2.375	0.625	5.000	—	1.500
1855	18.000	2.750	6.000	3.000	0.625	0.625	1.250	6.344	3.250	0.625	5.000	—	1.750

Contact Renold Jeffrey for weight specifications and for verification as dimensions are subject to change.

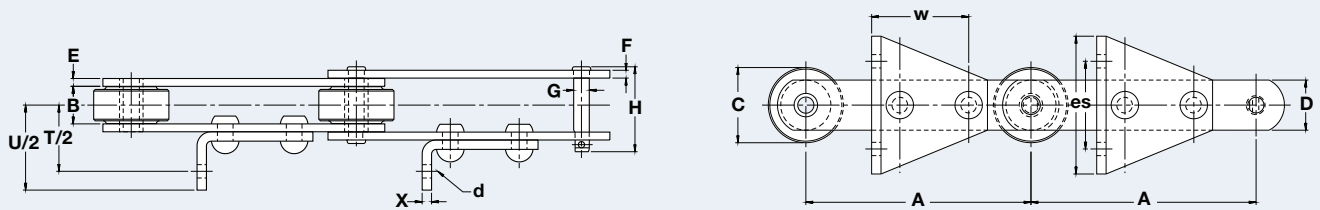




## G-9 Conveyor Chain Attachments

Dimensions are in inches unless otherwise indicated.

Chain No.	A	B	C	D	E	F	G	H	d	e	f	s	s <sub>1</sub>
4065	9.000	3.063	4.250	3.500	0.625	0.625	1.250	6.484	0.688	8.000	2.750	6.000	3.500
3252PR	9.000	2.625	3.000	2.500	0.500	0.500	1.000	5.422	0.438	6.500	2.500	4.500	4.000

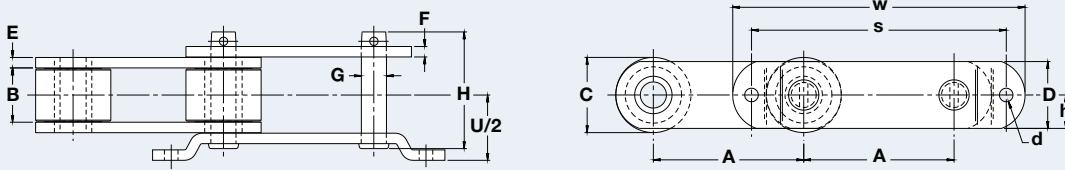


## G-19 Conveyor Chain Attachments

Dimensions are in inches unless otherwise indicated.

Chain No.	A	B	C	D	E	F	G	H	T/2	U/2	X	d	e	s	w
1709	9.000	1.625	3.000	2.000	0.250	0.250	0.625	3.344	2.563	3.313	0.250	0.500	5.500	3.500	6.375
IS911	9.000	1.500	3.000	2.000	0.313	0.313	0.625	3.406	2.625	3.375	0.375	0.500	5.500	3.500	6.375
1095	12.000	2.500	4.000	2.500	0.375	0.375	0.875	4.750	3.031	4.031	0.250	0.500	5.500	3.500	9.375
1211M	12.000	1.500	3.000	2.000	0.313	0.313	0.625	3.469	2.406	3.406	0.250	0.500	5.500	3.500	9.375
1222M	12.000	2.000	3.500	2.000	0.375	0.375	0.750	4.250	2.781	3.781	0.250	0.500	5.500	3.500	9.375
1233M	12.000	2.250	4.000	2.500	0.375	0.375	0.875	4.469	2.906	3.906	0.313	0.500	5.500	3.500	9.375
1244R	12.000	2.500	5.000	2.500	0.500	0.500	1.000	5.313	3.281	4.281	0.375	0.500	7.500	5.000	9.375
1322M	12.000	2.000	3.500	2.000	0.375	0.375	0.750	4.250	2.781	3.781	0.250	0.500	5.500	3.500	9.375
1743 1/2 M	12.000	1.625	3.250	2.500	0.375	0.375	0.750	3.938	2.594	3.594	0.250	0.500	5.500	3.500	9.375
276M	12.000	2.063	4.000	2.500	0.313	0.313	0.750	4.063	2.875	3.875	0.250	0.500	8.000	6.000	10.000
1855	18.000	2.750	6.000	3.000	0.625	0.625	1.250	6.344	3.656	4.656	0.375	0.500	5.500	3.500	12.375
1822M	18.000	2.000	3.500	2.000	0.375	0.375	0.750	4.156	2.781	3.781	0.250	0.500	5.500	3.500	12.375
1833R	18.000	2.250	4.000	2.500	0.375	0.375	0.875	4.531	2.906	3.906	0.313	0.500	5.500	3.500	12.375
1844R	18.000	2.500	5.000	2.500	0.500	0.500	1.000	5.250	3.281	4.281	0.375	0.500	7.500	5.000	12.375

Contact Renold Jeffrey for weight specifications and for verification as dimensions are subject to change.



## G-100 Conveyor Chain Attachments

Dimensions are in inches unless otherwise indicated.

Chain No.	A	B	C	D	E	F	G	H	d	U/2	s	w
4065	9.000	3.060	4.250	3.500	0.625	0.625	1.250	6.484	0.688	2.750	14.000	16.500
3252PR	9.000	2.625	3.000	2.500	0.500	0.500	1.000	5.422	0.688	2.500	14.000	16.500
4035PB	9.000	3.160	3.500	3.000	0.500	0.500	1.125	6.063	0.688	3.594	14.000	16.000
4037PB	9.000	3.250	4.500	4.000	0.625	0.625	1.500	7.000	0.810	3.910	15.250	17.500

Contact Renold Jeffrey for weight specifications and for verification as dimensions are subject to change.