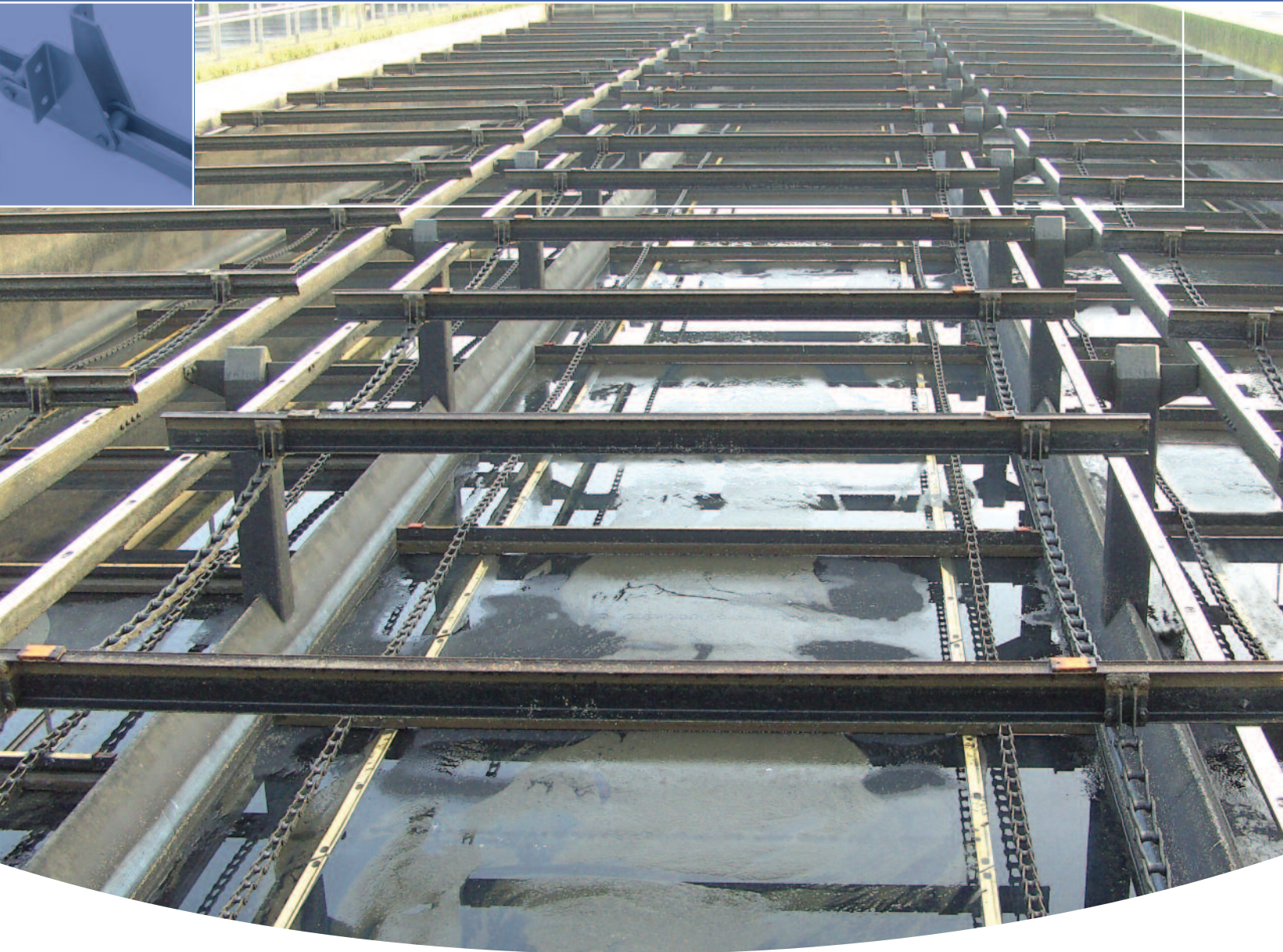


# *Wastewater Treatment*



**RENOLD  
JEFFREY**  
*Advancing Chain Technology*

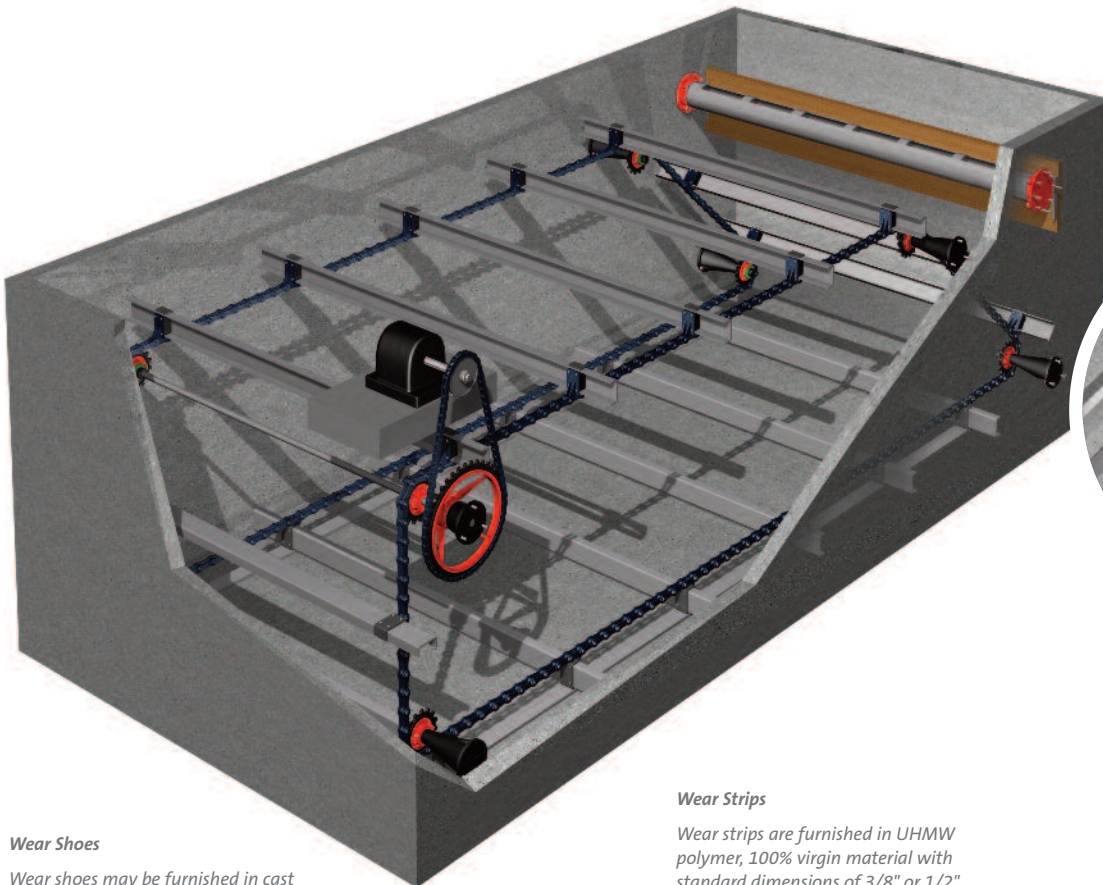
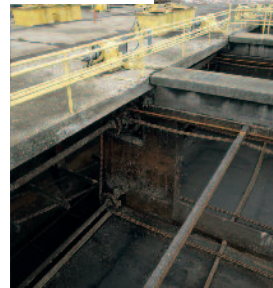
[www.renoldjeffrey.com](http://www.renoldjeffrey.com)

# Renold Jeffrey wastewater treatment

**Renold Jeffrey is your complete source for steel, non-metallic and cast products for the water & wastewater industry.**

Renold Jeffrey provides the broadest selection of chains and components to the wastewater / environmental industry for servicing rectangular clarifiers, grit collectors, bar and travelling water screens and multiple drive applications.

- Manufacture steel, Non-metallic, Stainless steel and Cast Chains
- Provider of UHMW, Nylon, Steel, Cast Sprockets and Jaw Clutches
- Related components, Fiberglass and Wooden Flights, Wear Shoes, Wear Strips



#### **Wear Shoes**

Wear shoes may be furnished in cast iron, steel, non-metallic polyurethane or UHMW polyethylene.

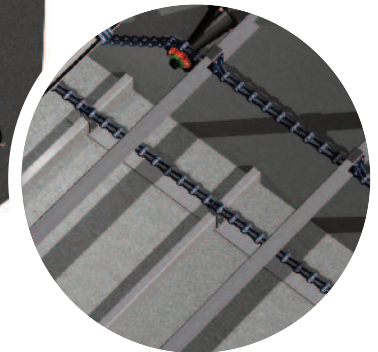
#### **Wear Strips**

Wear strips are furnished in UHMW polymer, 100% virgin material with standard dimensions of 3/8" or 1/2" thick, and varying widths as required by application.

#### **Sprockets**

Sprockets are made from all UHMW, Nylon, Steel, Cast, and Combinations

All Sprockets can be furnished with chain saving rims and hunting tooth design which will increase chain life.



#### **Fiberglass Flights**

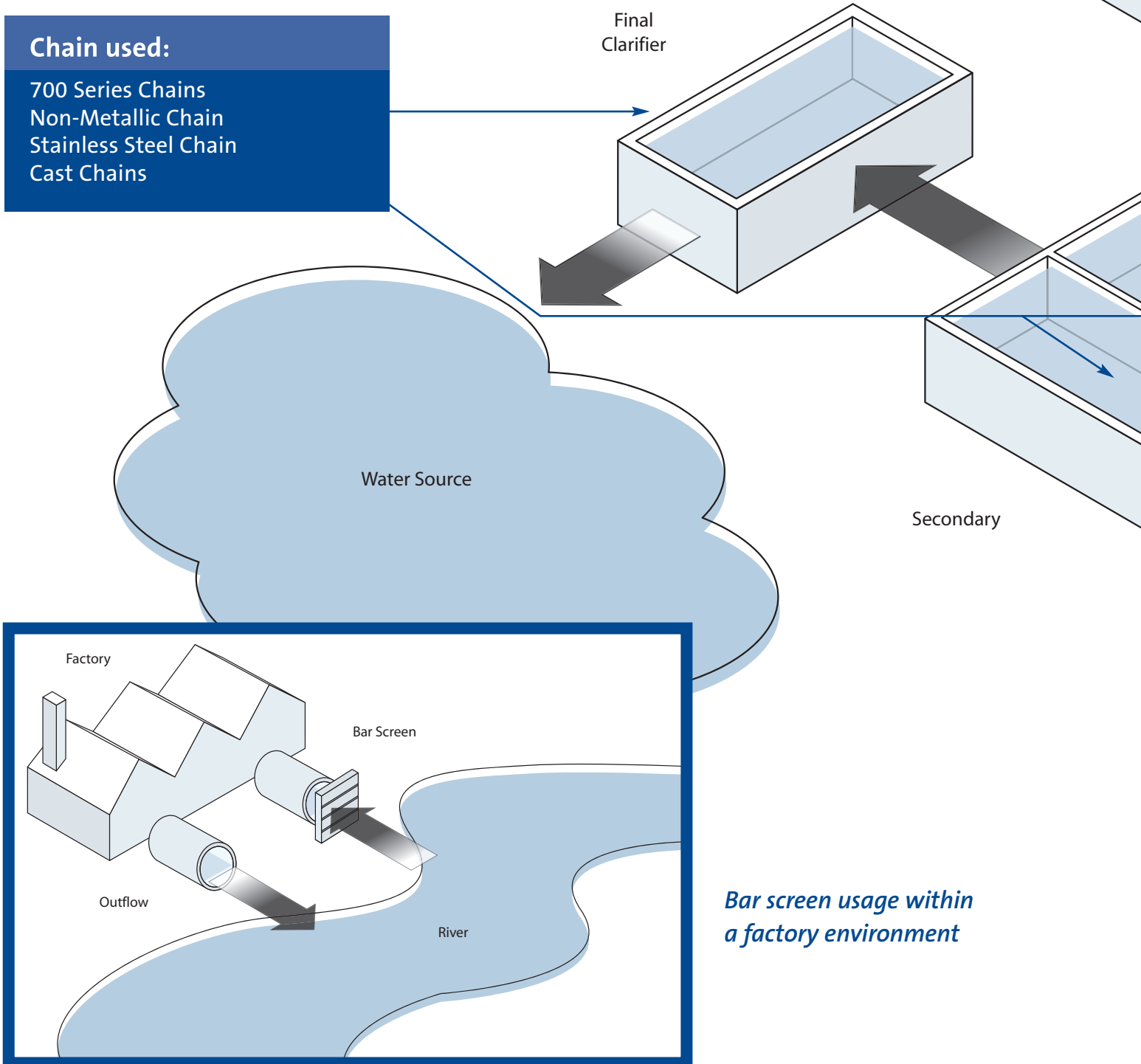
Fiberglass Flights are "C" channel type. Also available are laminated wood flights and are furnished in 6" and 8" tall sizes

# Wastewater treatment

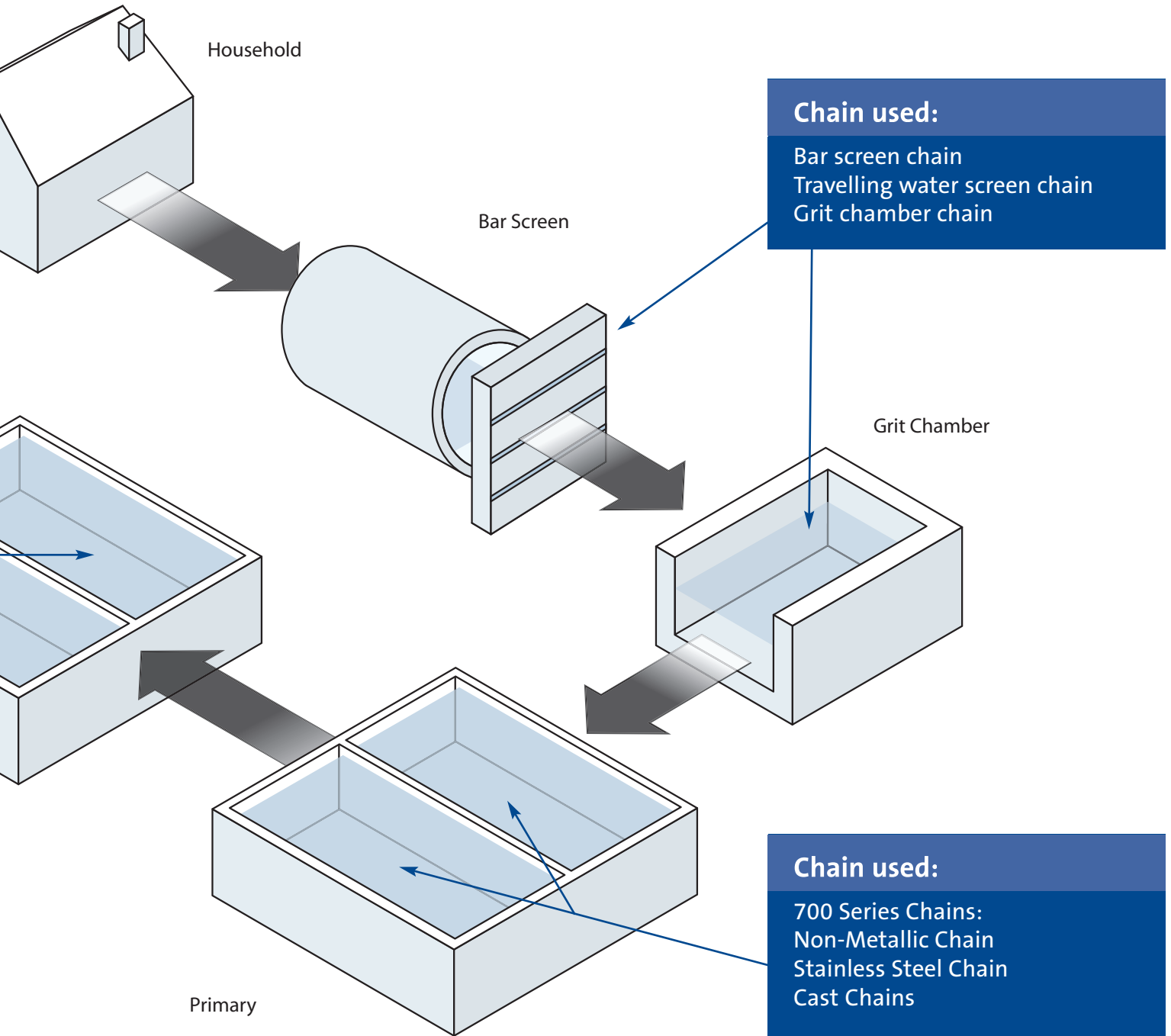
*With over 125 years of experience in chain design and manufacturing, Renold Jeffrey provides a comprehensive line of superior environmental products for the water and wastewater industry.*

## Chain used:

- 700 Series Chains
- Non-Metallic Chain
- Stainless Steel Chain
- Cast Chains



*Bar screen usage within a factory environment*



## Chains & sprockets for the wastewater industry



### Class 700 Stainless Steel Chain

Renold Jeffrey's 700SS sewage chain was developed to fill the void that exists between the non-metallic chain and cast malleable chain.

This chain features excellent corrosion resistant characteristics and superior strength and also weighs less than cast chain.



### JCCNCS-720S

JCCNCS-720S Chain is a lightweight, corrosion resistant chain capable of delivering excellent wear life in the most demanding applications.

Featuring links made of glass reinforced polyester combined with high strength pins made from an acetal alloy material allows this high quality non-metallic chain to achieve the superior characteristics required in various water and wastewater applications.



### Welded Steel Chains

Welded Steel Chains are the perfect solution in bar screens and grit collector applications.



### Sprockets

Manufactured from 100% UHMWPE, combination of cast/steel hubs and UHMWPE segments, all Cast, and/or Steel construction.



### Class 700 Pintle Chain

Renold Jeffrey's Class 700 Pintle Chains are of offset construction and are available in malleable iron or Supermal®.

Supermal® is a heat treated malleable iron having greater strength and superior resistance to wear and abrasion.



### Flights

Fiberglass flights are "C" channel type. Also available are laminated wood flights and are furnished in 6" and 8" tall sizes.



### Renold Jeffrey Drive Chains

Renold Jeffrey Drive Chains are available in Non-Metallic, Steel, and Stainless and designed around the application.

### Wear Shoes

Wear Shoes can be furnished in polyurethane and UHMW material.

### Wear Strips

Wear Strips are made of 100% virgin material and furnished 3/8" and 1/2" sizes.

**Corporate Headquarters**

2307 Maden Drive  
Morristown, TN 37813

Tel: (423) 586-1951

Tel: (800) 251-9012

Fax: (423) 581-2399

[sales@renoldjeffrey.com](mailto:sales@renoldjeffrey.com)

---

*In accordance with the policy of Renold to continually improve its products, the specifications in this publication are subject to change without notice.*

*For terms and conditions of sale, contact Renold.*

© Renold Power Transmission 2012.

Ref: REN53 / US / 03.12

