

**RENOLD**  
**JEFFREY**



**Hydro-Service<sup>®</sup>**

Superior corrosion resistance for chains

# Hydro-Service® Chains

## Powerful Protection Against Corrosion

Renold Hydro-Service® Chains protect your operation in corrosive environments.

These strong, long-lasting chains are specially coated and stand up to wet, humid, even saltwater operations. They last up to 30 times longer than conventionally coated chains without the risk of hydrogen embrittlement. If you need to run in wet environments, choose Hydro-Service®.



## Safety Coated for Your Operation

All components of Hydro-Service® Chains are mechanically coated prior to assembly to provide complete coverage and protection to all vital surfaces, including the pin/bushing interface.

Mechanical plating maintains the integrity of the chain without risking the embrittlement that conventional plating can cause. Unlike conventional zinc or nickel plating, Hydro-Service® coating will not chip or peel. Unlike other coatings, Hydro-Service® contains no hexavalent chromium, a known carcinogen.

Protect your processes and your people with Hydro-Service® Chains.



# Lab Tests Confirm Corrosion Protection

Hydro-Service®

Nickel-Plated

Carbon Steel

60-day Outdoor Exposure

14-day Saltwater Immersion Test



After 60 days of outdoor exposure, Hydro-Service® demonstrates the rust resistance that makes it the chain of choice.

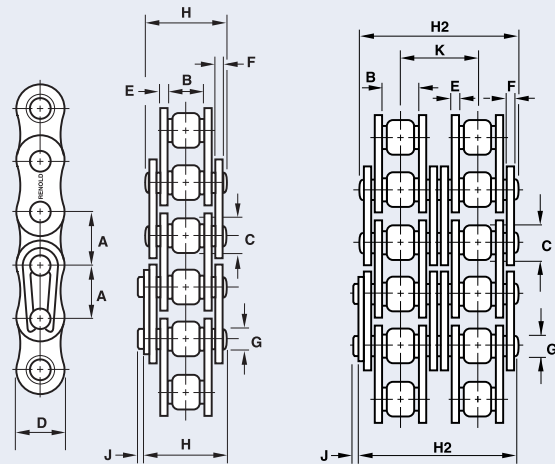
After 14 days in and out of 5% saltwater solution (equivalent to sea water), Hydro-Service® clearly outlasts nickel-plated and carbon steel chain.

## Put Hydro-Service® to Work

- Packaging
- Food processing
- Bottling
- Seawater environments
- Meat and poultry processing plants
- Vegetable processing plants
- Seafood processing plants
- Washdown equipment
- Outdoor applications



## 4 Hydro-Service® ANSI Single, Double Strand

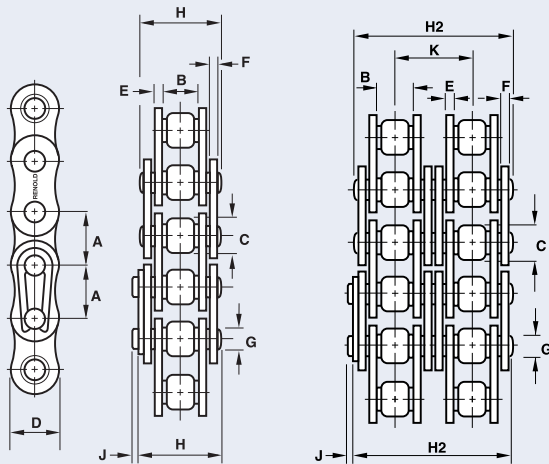


### Hydro-Service® ANSI Single-Strand Roller Chain

Chain No.	Pitch	Inside Width Min	Roller Diam Max	Plate Height Max	Inner Plate Thick Max	Outer Plate Thick Max	Pin Diam Max	Pin Length Max	Conn Link Extra Max	Trans Pitch	Tensile Strength Min	Weight
	A	B	C	D	E	F	G	H	J	K	Lbs	Lbs/Ft
35HSC	0.375	0.184	0.200	0.356	0.049	0.049	0.141	0.472	0.043	—	1,760	0.24
40HSC	0.500	0.309	0.312	0.475	0.061	0.061	0.157	0.646	0.055	—	3,125	0.40
50HSC	0.625	0.370	0.400	0.594	0.080	0.080	0.200	0.803	0.043	—	4,880	0.67
60HSC	0.750	0.495	0.469	0.713	0.094	0.094	0.235	0.996	0.043	—	7,030	0.99
80HSC	1.000	0.620	0.625	0.950	0.128	0.128	0.313	1.287	0.118	—	12,500	1.88
100HSC	1.250	0.744	0.750	1.188	0.160	0.160	0.376	1.563	0.165	—	19,530	2.82
120HSC	1.500	0.993	0.875	1.425	0.189	0.189	0.437	1.941	0.209	—	28,125	3.83
140HSC	1.750	0.993	1.000	1.663	0.221	0.221	0.500	2.083	0.205	—	38,280	5.24
160HSC	2.000	1.242	1.125	1.990	0.250	0.250	0.563	2.484	0.256	—	50,000	6.99

### Hydro-Service® ANSI Double-Strand Roller Chain

Chain No.	Pitch	Inside Width Min	Roller Diam Max	Plate Height Max	Inner Plate Thick Max	Outer Plate Thick Max	Pin Diam Max	Pin Length Max	Conn Link Extra Max	Trans Pitch	Tensile Strength Min	Weight
	A	B	C	D	E	F	G	H2	J	K	Lbs	Lbs/Ft
35-2HSC	0.375	0.184	0.200	0.356	0.049	0.049	0.141	0.874	0.043	0.399	3,520	0.47
40-2HSC	0.500	0.309	0.312	0.475	0.061	0.061	0.157	1.213	0.055	0.566	6,250	0.81
50-2HSC	0.625	0.370	0.400	0.594	0.080	0.080	0.200	1.512	0.043	0.713	9,760	1.41
60-2HSC	0.750	0.495	0.469	0.713	0.094	0.094	0.235	1.894	0.043	0.897	14,060	2.05
80-2HSC	1.000	0.620	0.625	0.950	0.128	0.128	0.313	2.437	0.118	1.153	25,000	3.70
100-2HSC	1.250	0.744	0.750	1.188	0.160	0.160	0.376	2.968	0.165	1.408	39,060	5.64
120-2HSC	1.500	0.993	0.875	1.425	0.189	0.189	0.437	3.728	0.209	1.789	56,250	7.39
140-2HSC	1.750	0.993	1.000	1.663	0.221	0.221	0.500	4.008	0.205	1.924	76,560	10.41
160-2HSC	2.000	1.242	1.125	1.900	0.250	0.250	0.563	4.787	0.256	2.305	100,000	13.84

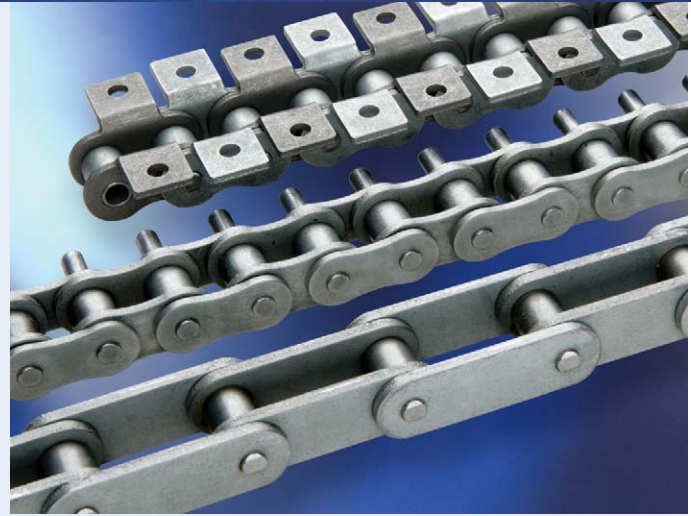
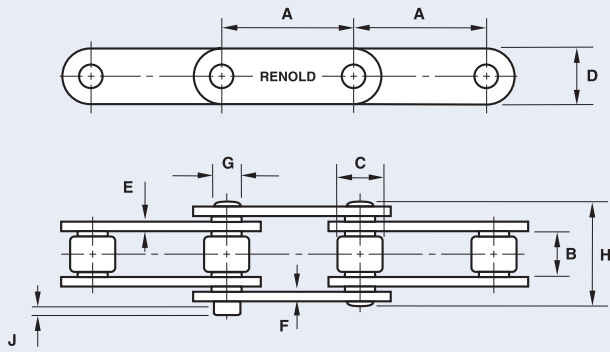


### Hydro-Service® BS Single-Strand Roller Chain

Chain No.	Pitch	Inside Width Min	Roller Diam Max	Plate Height Max	Inner Plate Thick Max	Outer Plate Thick Max	Pin Diam Max	Pin Length Max	Conn Link Extra Max	Trans Pitch	Tensile Strength Min	Weight
	A	B	C	D	E	F	G	H	J	K	Lbs	Lbs/Ft
06BHSC	0.375	0.225	0.250	0.325	0.051	0.041	0.129	0.492	0.051	—	2,001	0.26
08BHSC	0.500	0.305	0.335	0.465	0.061	0.061	0.175	0.669	0.059	—	4,002	0.47
10BHSC	0.625	0.380	0.400	0.580	0.061	0.061	0.200	0.740	0.051	—	4,991	0.62
12BHSC	0.750	0.460	0.475	0.635	0.071	0.071	0.225	0.862	0.043	—	6,497	0.81
16BHSC	1.000	0.670	0.625	0.830	0.162	0.122	0.326	1.374	0.087	—	13,489	1.88
20BHSC	1.250	0.770	0.750	1.040	0.182	0.142	0.401	1.567	0.106	—	21,357	2.59
24BHSC	1.500	1.000	1.000	1.315	0.240	0.200	0.576	2.071	0.268	—	35,970	5.01

### Hydro-Service® BS Double-Strand Roller Chain

Chain No.	Pitch	Inside Width Min	Roller Diam Max	Plate Height Max	Inner Plate Thick Max	Outer Plate Thick Max	Pin Diam Max	Pin Length Max	Conn Link Extra Max	Trans Pitch	Tensile Strength Min	Weight
	A	B	C	D	E	F	G	H2	J	K	Lbs	Lbs/Ft
06B-2HSC	0.375	0.225	0.250	0.325	0.051	0.041	0.129	0.906	0.051	0.403	3,800	0.50
08B-2HSC	0.500	0.305	0.335	0.465	0.061	0.061	0.175	1.197	0.059	0.548	6,992	0.93
10B-2HSC	0.625	0.380	0.400	0.580	0.061	0.061	0.200	1.394	0.051	0.653	10,004	1.21
12B-2HSC	0.750	0.460	0.475	0.635	0.071	0.071	0.225	1.630	0.043	0.766	12,994	1.61
16B-2HSC	1.000	0.670	0.625	0.830	0.162	0.122	0.326	2.630	0.087	1.255	23,830	3.69
20B-2HSC	1.250	0.770	0.750	1.040	0.182	0.142	0.401	3.020	0.106	1.435	38,218	5.23
24B-2HSC	1.500	1.000	1.000	1.315	0.240	0.200	0.576	3.988	0.268	1.904	62,946	9.92



Hydro-Service® Double Pitch Conveyor Series Chain — Standard Roller

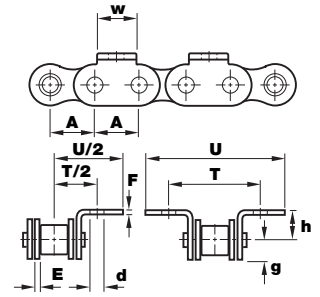
Chain No.	Pitch	Inside Width Min	Roller Diam Max	Plate Height Max	Inner Plate Thick Max	Outer Plate Thick Max	Pin Diam Max	Pin Length Max	Conn Link Extra Max	Trans Pitch	Tensile Strength Min	Weight
	A	B	C	D	E	F	G	H	J	K	Lbs	Lbs/Ft
C2040HSC	1.000	0.309	0.312	0.465	0.059	0.059	0.157	0.701	0.055	—	3,125	0.34
C2050HSC	1.250	0.370	0.400	0.591	0.079	0.079	0.200	0.858	0.043	—	4,880	0.56
C2060HSC	1.500	0.495	0.469	0.701	0.128	0.128	0.235	1.126	0.043	—	7,030	0.97
C2080HSC	2.000	0.620	0.625	0.949	0.160	0.160	0.313	1.409	0.118	—	12,500	1.63
C2100HSC	2.500	0.748	0.750	1.134	0.189	0.189	0.376	1.669	0.165	—	19,530	2.33
C2120HSC	3.000	1.000	0.875	1.382	0.221	0.221	0.437	2.063	0.209	—	28,125	3.31
C2160HSC	4.000	1.240	1.125	1.886	0.287	0.287	0.563	2.583	0.256	—	50,000	5.38

Hydro-Service® Double Pitch Conveyor Series Chain — Large Roller

Chain No.	Pitch	Inside Width Min	Roller Diam Max	Plate Height Max	Inner Plate Thick Max	Outer Plate Thick Max	Pin Diam Max	Pin Length Max	Conn Link Extra Max	Trans Pitch	Tensile Strength Min	Weight
	A	B	C	D	E	F	G	H	J	K	Lbs	Lbs/Ft
C2042HSC	1.000	0.309	0.625	0.465	0.059	0.059	0.157	0.701	0.055	—	3,125	0.55
C2052HSC	1.250	0.370	0.750	0.591	0.079	0.079	0.200	0.858	0.043	—	4,880	0.85
C2062HSC	1.500	0.495	0.875	0.701	0.128	0.128	0.235	1.126	0.043	—	7,030	1.36
C2082HSC	2.000	0.620	1.125	0.949	0.160	0.160	0.313	1.409	0.118	—	12,500	2.26
C2102HSC	2.500	0.748	1.562	1.134	0.189	0.189	0.376	1.669	0.165	—	19,530	3.80
C2122HSC	3.000	1.000	1.750	1.382	0.221	0.221	0.437	2.063	0.209	—	28,125	5.31
C2162HSC	4.000	1.240	2.250	1.886	0.287	0.287	0.563	2.583	0.256	—	50,000	8.60

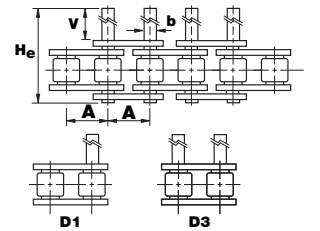
A-1 & K-1 Attachment Dimensions

Chain No.	Pitch	Inner Plate Thick Max	Outer Plate Thick Max	K-1 Across Attach Holes	K-1 Overall Width	Hole Diam	Plate Edge to C/L	Attach Height	Tab Width
	A	E	F	T	U	d	g	h	w
40	0.500	0.061	0.061	1.000	1.358	0.142	0.217	0.311	0.374
50	0.625	0.080	0.080	1.253	1.835	0.209	0.283	0.406	0.500
60	0.750	0.094	0.094	1.500	2.228	0.209	0.339	0.469	0.626
80	1.000	0.128	0.128	2.002	2.761	0.265	0.450	0.625	0.751
100	1.250	0.160	0.160	2.500	3.412	0.329	0.583	0.781	1.000



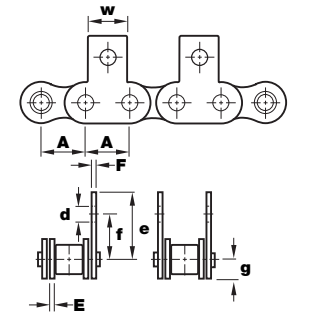
D-1 & D-3 Attachment Dimensions

Chain No.	Pitch	Pin Length Max	Extension Length Max	Pin Diam
	A	H <sub>e</sub>	V	b
40	0.500	0.674	0.383	0.157
50	0.625	0.828	0.468	0.200
60	0.750	1.013	0.562	0.235
80	1.000	1.328	0.751	0.313
100	1.250	1.645	0.938	0.376



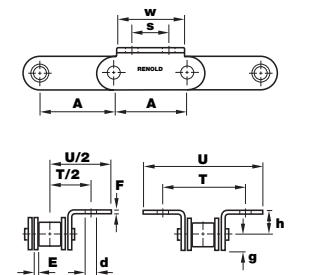
SA-1 & SK-1 Attachment Dimensions

Chain No.	Pitch	Inner Plate Thick Max	Outer Plate Thick Max	Hole Diam	SA-1/SK-1 C/L to Attach Top	SA-1/SK-1 C/L to Attach Hole	Plate Edge to C/L	Tab Width
	A	E	F	d	e	f	g	w
40	0.500	0.061	0.061	0.142	0.732	0.500	0.217	0.374
50	0.625	0.080	0.080	0.209	0.902	0.626	0.283	0.500
60	0.750	0.094	0.094	0.209	1.063	0.720	0.339	0.626
80	1.000	0.128	0.128	0.265	1.351	0.969	0.450	0.751
100	1.250	0.160	0.160	0.329	1.700	1.250	0.583	1.000



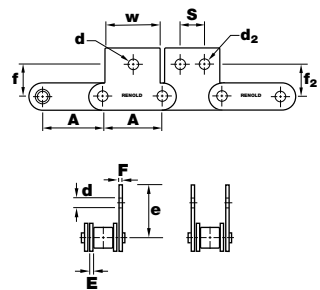
A-1, A-2, & K-1, K-2 Attachment Dimensions

Chain No.	Pitch	Inner Plate Thick Max	Outer Plate Thick Max	K-1 Across Attach Holes	K-1 Overall Width	Hole Diam	Plate Edge to C/L	Attach Height	Attach Hole Pitch	Tab Width
	A	E	F	T	U	d	g	h	s	w
C2040	1.000	0.061	0.061	1.000	1.520	0.138	0.226	0.358	0.375	0.750
C2050	1.250	0.080	0.080	1.250	1.900	0.209	0.291	0.437	0.468	0.937
C2060	1.500	0.094	0.094	1.686	2.430	0.209	0.346	0.579	0.562	1.130
C2080	2.000	0.128	0.128	2.190	3.190	0.280	0.406	0.752	0.750	1.500
C2100	2.500	0.160	0.160	2.626	3.938	0.344	0.563	0.922	0.937	1.875



SA-1, SA-2 & SK-1, SK-2 Attachment Dimensions

Chain No.	Pitch	Inner Plate Thick Max	Outer Plate Thick Max	SA-1/SK-1 Hole Diam	SA-2/SK-2 Hole Diam	C/L to Attach Top	SA-1/SK-1 C/L to Attach Hole	SA-2/SK-2 C/L to Attach Hole	Attach Hole Pitch	Tab Width
	A	E	F	d	d <sub>2</sub>	e	f	f <sub>2</sub>	s	w
C2040	1.000	0.061	0.061	0.209	0.138	0.783	0.437	0.531	0.375	0.750
C2050	1.250	0.080	0.080	0.280	0.209	0.969	0.563	0.626	0.468	0.937
C2060	1.500	0.094	0.094	0.331	0.209	1.189	0.689	0.748	0.562	1.130
C2080	2.000	0.128	0.128	0.409	0.280	1.594	0.874	1.000	0.750	1.500
C2100	2.500	0.160	0.160	0.547	0.344	1.984	1.125	1.250	0.937	1.875



# Hydro-Service®

Superior corrosion resistance for chains

- Engineered to perform in wet and washdown environments
- Same strength and working load as Renold carbon steel chain
- Mechanically applied coating — will not chip, flake, or peel
- Contains no hexavalent chromium

## Corporate Headquarters

2307 Maden Drive  
Morristown, TN 37813

Tel: (423) 586-1951  
Tel: (800) 251-9012  
Fax: (423) 581-2399

## National Service Center

2305 Global Way  
Hebron, KY 41048

Tel: (859) 334-8520  
Tel: (800) 251-9012  
Fax: (859) 334-8550

## West Coast Service Center

2301 A Stagecoach Rd.  
Stockton, CA 95215

Tel: (209) 466-4646  
Tel: (800) 251-9012  
Fax: (209) 466-1749

**RENOLD  
JEFFREY**

Advancing Chain Technology  
[www.renoldjeffrey.com](http://www.renoldjeffrey.com)

