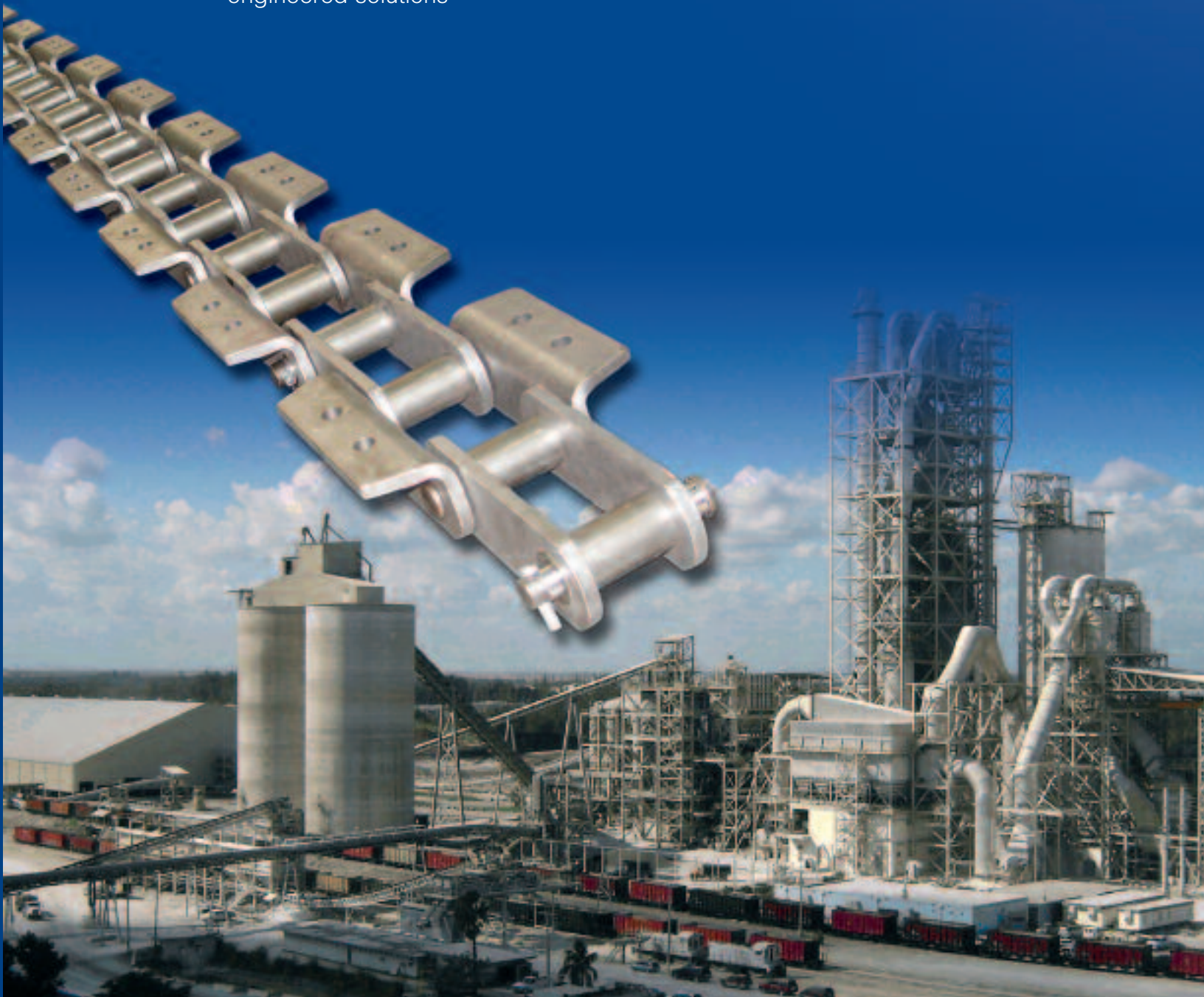


Cement Mill Chains

- Strong, long-lasting chains, pan conveyors, and drag chains for critical applications
- Innovative, problem-solving products, designed and built to perform and last
- Specializing in custom designs and engineered solutions

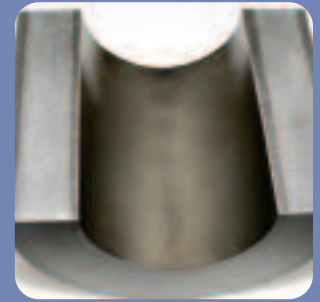
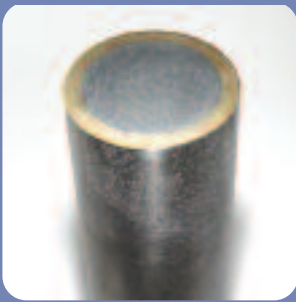




Today's cement mills require high-performance chains to keep running at maximum capacity. High shock loads, dust and debris, conveying hot material, conveying up steep inclines, lifting heavy loads... These are demanding conditions that require innovative solutions. Renold Jeffrey delivers.

The Renold Jeffrey Story

Renold and Jeffrey are the oldest names in industrial chain. In fact, Jeffrey Chain has been manufacturing high-quality, heavy-duty chain for more than 120 years. You can't find better chain than Renold Jeffrey. We understand the challenges of bulk handling, and we know how to meet your requirements.



Manufactured to Last

Pins and bushings are made from alloy steel and deep case hardened for maximum wear life and toughness. Pins are through hardened and induction hardened for superior strength. Pins and bushings are centerless ground to accurately control tolerance and surface finish. Plates are designed to eliminate stress risers in plate holes — resulting in maximized chain life.



Better Fatigue Strength

All chain parts are designed to provide maximum fatigue life. Plates are through hardened for maximum toughness. We use high-quality alloy steels or the materials your application requires. Every part is manufactured to the tightest tolerances for higher quality. Our in-house heat treatment allows us to better control the process and to deliver longer-lasting chains. We build the highest quality into every part.

Rapid Response

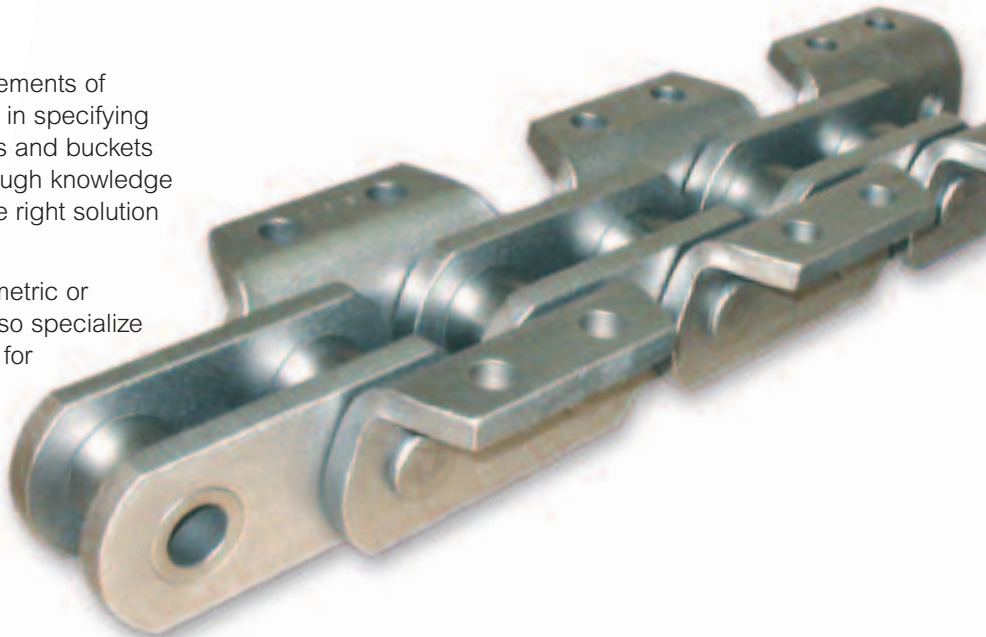
Renold Jeffrey maintains large inventories of chains and parts so we can respond to your needs. We can also quickly develop custom solutions, when required — in fact, they're our specialty. Count on Renold Jeffrey to deliver the chains you need to keep your operation running at peak capacity.



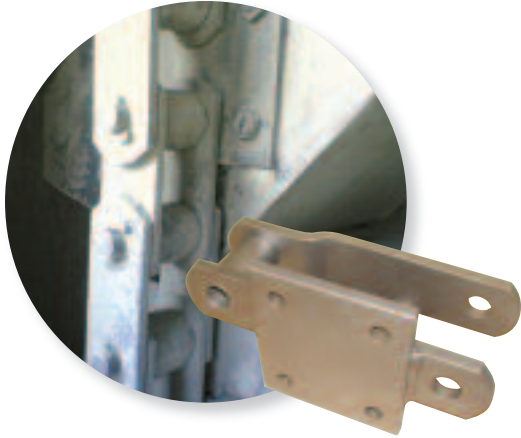
Engineering Expertise

Our engineers understand the unique requirements of cement mills. They have years of experience in specifying the right materials, sizes, and types of chains and buckets for a variety of operations. They have a thorough knowledge of metallurgy, so they can help you select the right solution for your operation.

Retrofits of existing OEM designs, either of metric or imperial dimensions, are our specialty. We also specialize in custom designs and engineered solutions for customer-specific applications.



Solutions for Cement Mills



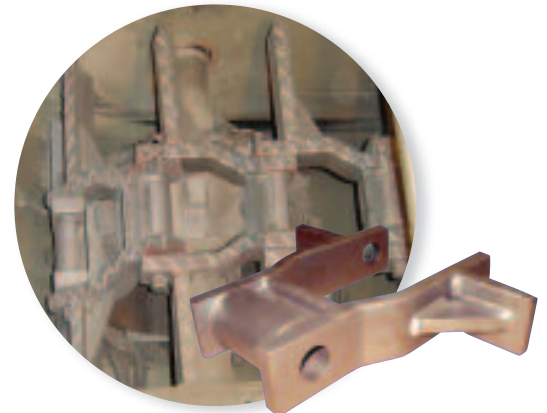
Super Capacity Bucket Elevator Chain



Mill Duty Bucket Elevator Chain



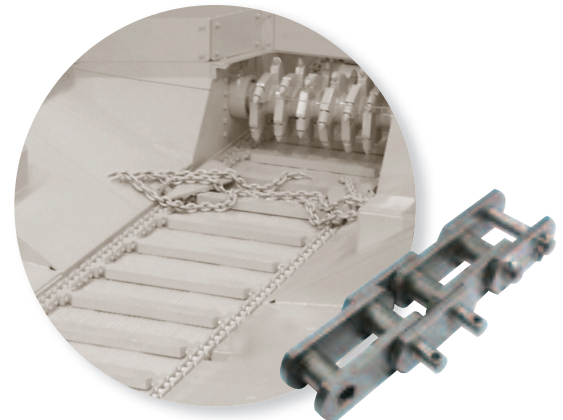
Reclaim Conveyor Chain



Hot Clinker Drag Chain



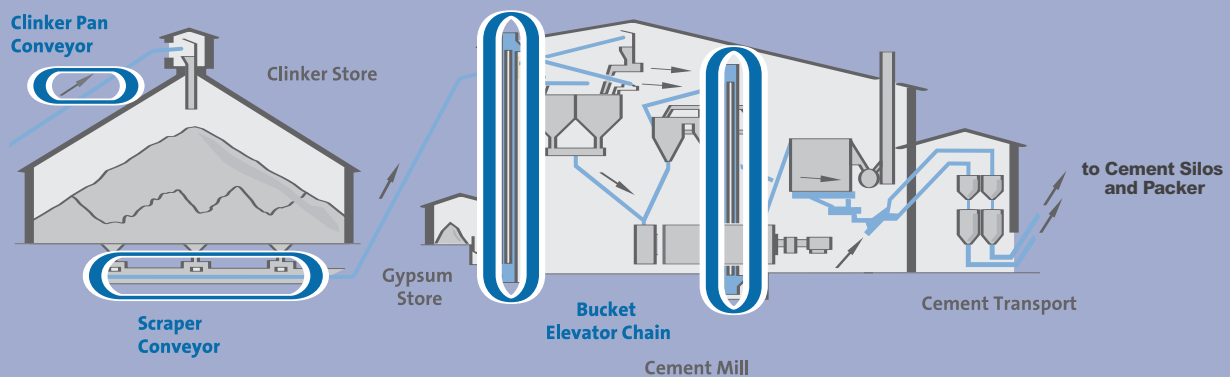
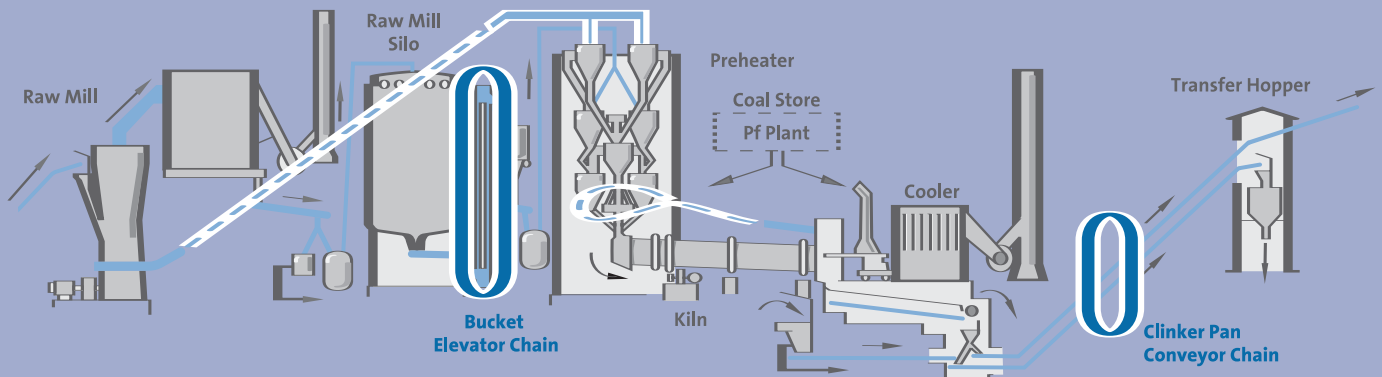
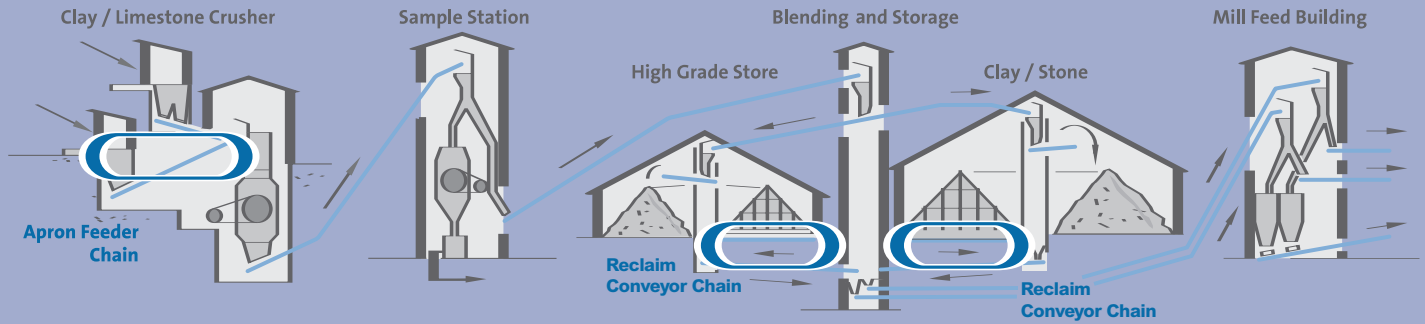
Deep Pan Conveyor Chain



Breaker Feeder Chain

Manufacturing Process

Renold Jeffrey heavy-duty chains, aprons, buckets, and sprockets keep cement mills running longer. Count on Renold Jeffrey for the longest-lasting and most reliable products for your facility.



Bucket Elevator Chains

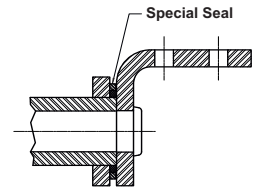
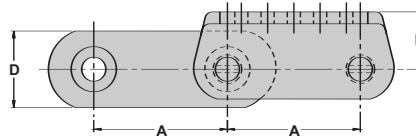
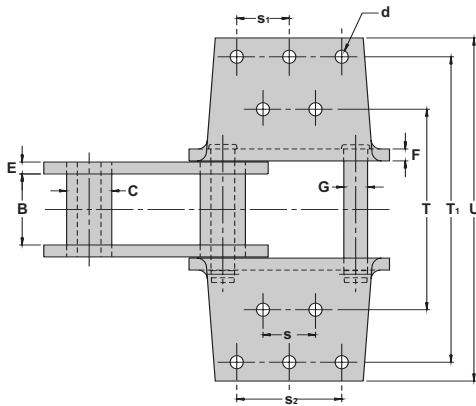
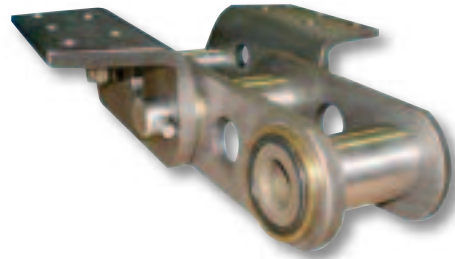
Renold Jeffrey Bucket Elevator Chains are built to last. Pins and bushings are made from high-quality alloy steel for maximum wear life and toughness. Pins are made from alloy steel and induction hardened for maximum wear resistance. Pins and bushings are centerless ground to improve wear life and to provide ideal fits between mating parts. Hardened alloy-steel sidebars provide optimal strength and toughness. Exceptional plate hole quality and full round pin-and-bushing design provide optimal press fits and maximum fatigue resistance.



Sealed Joint Chains

Solution-oriented design innovation

Renold Jeffrey Sealed Joint Chains lock in lube and lock out dirt and debris. Available in nearly all of our elevator chains, this innovative solution dramatically increases wear life, reducing production downtime and maintenance costs.

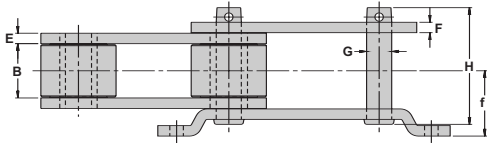
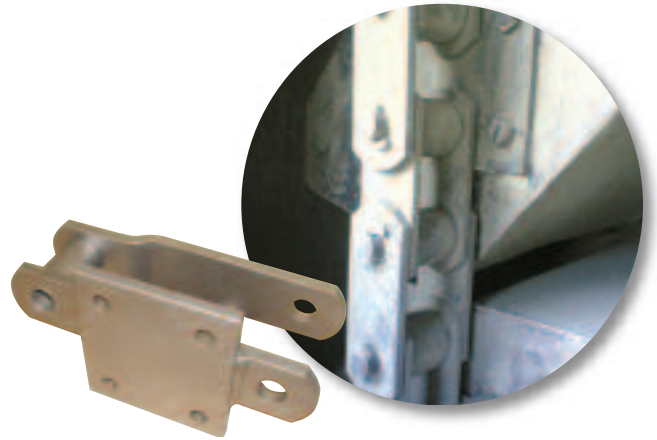


Dimensions are in inches unless otherwise indicated.

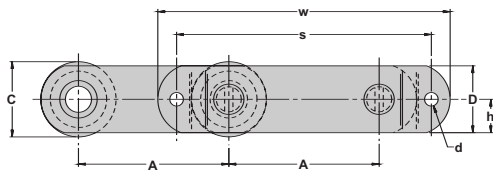
Chain No.	Pitch	Inside Width	Knuckle Bushing Dia.	Sidebar		Pin Dia.									Attachment		Rated Working Load	Ultimate Strength
				Width	Thick										Type	No. Holes		
	A	B	C	D	E/F	G	U	T ₁	T	s ₂	s	s ₁	d	h			Lbs.	Lbs.
6956-PB	6.00	3.00	1.750	3.00	0.500	1.000	9.56		7.250		2.50		0.688	1.875	K-24	4	16,000	144,500
6867-R	6.00	3.00	1.750	3.25	0.500	1.000	14.00	12.00	7.000	3.50	3.50		0.563	2.500	K-44	8	14,000	170,000
6866-R	6.00	2.50	2.375	3.00	0.500	1.250	9.81		6.313		2.25		0.688	2.375	K-2	4	17,400	167,000
6869-R	6.00	3.72	2.375	4.00	0.625	1.250	15.00	13.00	9.000	4.50	2.75		0.688	3.000	K-44	8	22,000	267,000
6969-R	6.00	3.72	2.500	4.00	0.625	1.500	15.00	13.00	9.000	4.50	2.75		0.688	3.000	K-44	8	30,000	275,000
6864-R	7.00	3.72	2.375	4.00	0.625	1.250	15.00	13.00	9.000	5.50	3.75	2.75	0.688	3.000	K-443	10	22,000	267,000
6684	7.00	3.75	2.500	4.00	0.625	1.375	15.00	13.00	9.000	5.50	3.75	2.75	0.688	3.000	K-443 K-44	10	24,000	270,000
6875-R	7.00	3.75	2.500	4.00	0.625	1.500	15.00	13.00	9.000	5.50	3.75	2.75	0.688	3.000	K-443 K-44	10	30,000	275,000
6874	7.00	4.00	2.750	4.50	0.750 0.625	1.750	15.50	13.50	9.500	5.50	3.75	2.75	0.688	3.125	K-443 K-44	10	38,000	420,000

Super Capacity Bucket Elevator Chains

Super Capacity Bucket Elevator Chains are designed and engineered for maximum fatigue resistance and wear life — the features you need to keep your mill running continuously. Component parts are carefully crafted to provide long-lasting operation. Pins and bushings are alloy steel and case hardened for ultimate wear resistance. Sidebars are also hardened to provide increased chain strength.



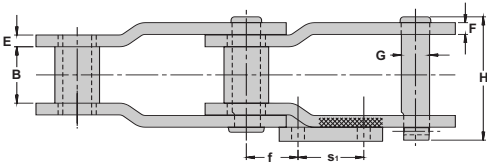
G-100



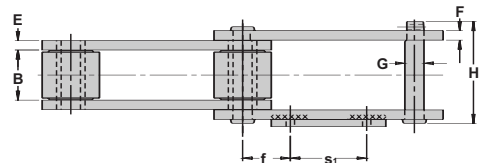
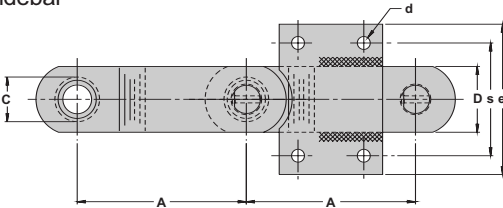
Dimensions are in inches unless otherwise indicated.

Chain No.	Pitch	Inside Width	Roller Dia.	Sidebar		Pin Dia.	w	s	H	h	d	f	Rated Working Load	Ultimate Strength
				Width	Thick									
	A	B	C	D	E/F	G							Lbs.	Lbs.
3252-PR	9.00	2.63	3.000	2.50	0.500	1.000	16.50	14.00	5.422	1.25	0.688	3.359	12,650	116,000
4035-PB	9.00	3.16	3.500	3.00	0.500	1.125	16.00	14.00	6.016	1.50	0.688	3.593	16,400	131,700
4065	9.00	3.06	4.250	3.50	0.625	1.250	16.50	14.00	6.484	1.75	0.688	3.938	19,000	215,000
4037-PB	9.00	3.25	4.500	4.00	0.625	1.500	17.50	15.25	7.000	2.00	0.810	3.910	27,000	253,000

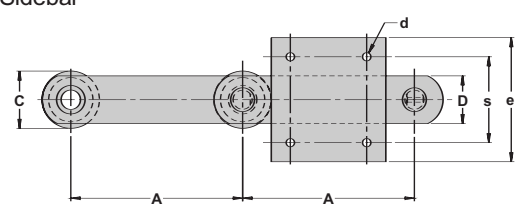
G-9



Offset Sidebar



Straight Sidebar



Dimensions are in inches unless otherwise indicated.

Chain No.	Pitch	Inside Width	Roller/Bushing Dia.	Sidebar		Pin Dia.	e	s	H	s ₁	d	f	Rated Working Load	Ultimate Strength
				Width	Thick									
	A	B	C	D	E/F	G							Lbs.	Lbs.
6859-R*	9.00	2.50	1.750	2.50	0.500	1.000	6.00	4.00	5.390	3.50	0.66	3.250	14,000	130,000
6881-AR*	9.00	3.00	2.380	3.50	0.625	1.500	8.00	5.50	6.563	3.50	0.66	2.750	24,500	260,000
6889-PB*	9.00	2.75	2.750	4.00	0.625	1.623	7.50	6.00	6.188	4.00	0.69	2.500	26,000	260,000
3252-PR	9.00	2.63	3.000	2.50	0.500	1.000	6.50	4.50	5.422	4.00	0.44	2.500	12,650	116,000
4065	9.00	3.06	4.250	3.50	0.630	1.250	8.00	6.00	6.484	3.50	0.69	2.750	19,000	215,000

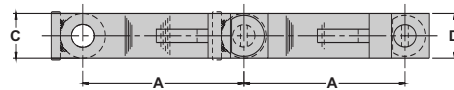
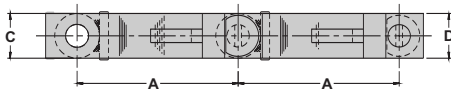
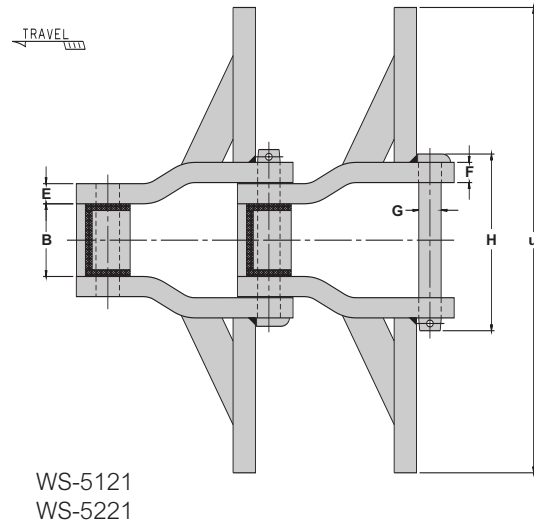
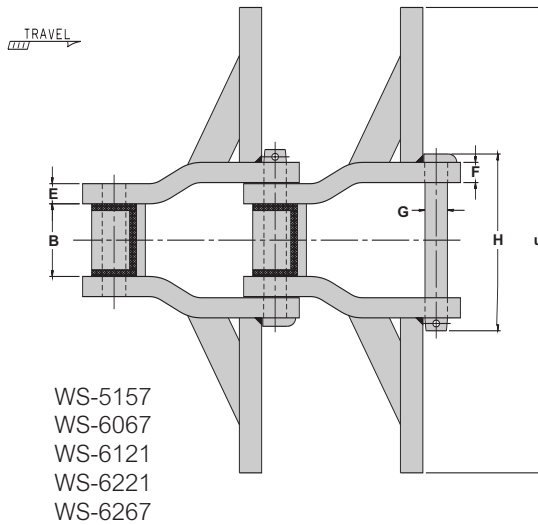
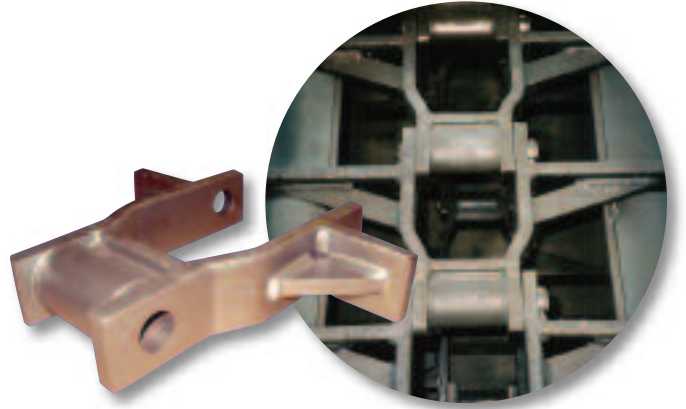
*Denotes offset sidebar and stud bushing

Hard Face Welded Steel Drag Chains

Renold Jeffrey Hard Face Welded Steel Drag Chains are designed to last. Every chain has induction-hardened, press-fit pins and positive locking to allow greater pin loading and to prevent pin movement at elevated temperatures. And all chain parts are heat treated to add toughness, durability, and longer wear life.

HF chains have hard-face sidebars, faceplates, and wings on both sides. This is recommended for the demanding conditions at cement plants. However, chains can be supplied without hard facing, if requested.

H and HHF chains can run in material temperatures up to 1,000° F.



Dimensions are in inches unless otherwise indicated.

Chain No.	Base Chain Weight	Pitch	Inside Width	Barrel	Sidebar		Pin Dia.	U	H	Rated Working Load	Ultimate Strength
					Height	Thick					
	Lbs./Ft.	A	B	C	D	E/F	G			Lbs.	Lbs.
WS5157-H	23	6.05	3.000	1.75	2.50	0.625	1.125	8-21	6.875	18,200	180,000
WS6067-HHF	27	9.00	3.625	2.50	2.50	0.750	1.250	10-24	8.018	24,300	230,000
WS6267-HHF	27	9.00	3.630	2.50	2.50	0.750	1.375	10-20	8.062	26,700	210,000
WS5121-HHF	35	9.00	3.630	2.50	2.50	1.125	1.250	10-30	9.873	27,600	275,000
WS5221-HHF	36	9.00	3.630	2.50	2.50	1.125	1.375	10-30	9.813	30,300	305,000
WS6121-HHF	36	9.00	3.630	2.50	2.50	1.125	1.250	10-30	9.875	27,600	275,000
WS6221-HHF	36	9.00	3.630	2.50	2.50	1.125	1.375	10-30	9.813	30,300	305,000

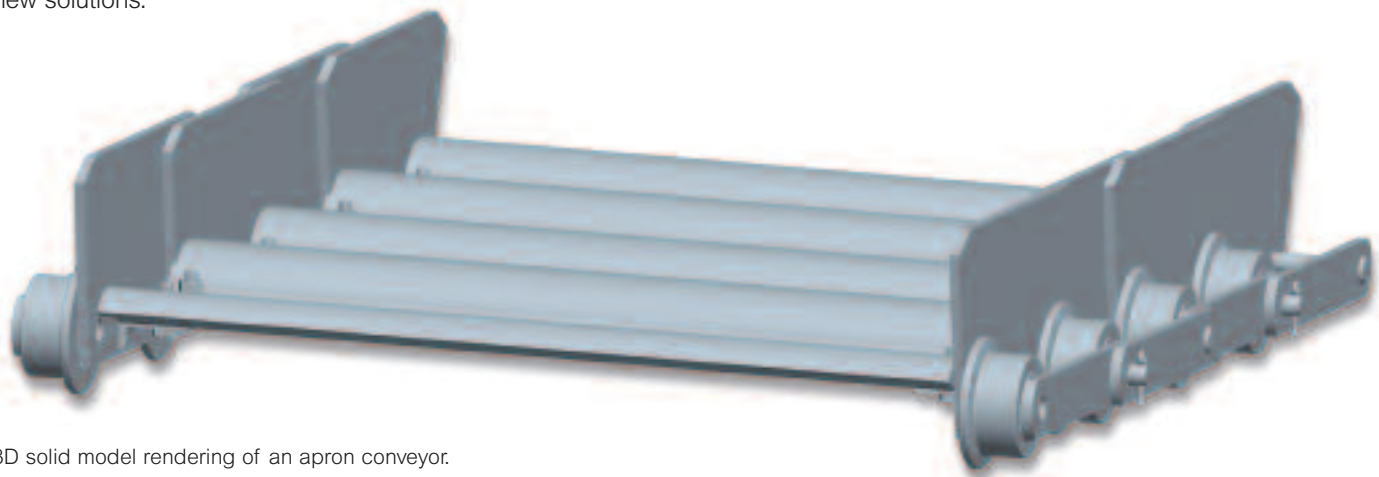
Apron and Deep Pan Conveyors

Renold Jeffrey manufactures the widest variety of Apron, Deep Pan, and Feeder Conveyors for bulk handling in the industry. Carefully crafted to the highest tolerances in alloy or carbon steel, we have the custom solution for your specific conveying needs.



Computer-Aided Design

Renold Jeffrey utilizes the latest technology in CAD and solids modeling to rapidly design and prototype new solutions.



3D solid model rendering of an apron conveyor.

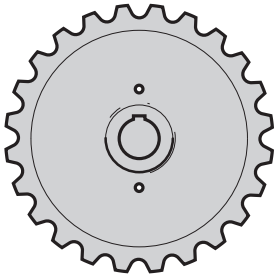
Stacker/Reclaimer Chains

Renold Jeffrey manufactures a wide variety of Stacker/Reclaimer Chains for U.S. and European manufacturers. These chains are designed and built to increase longevity and wear life for your system.

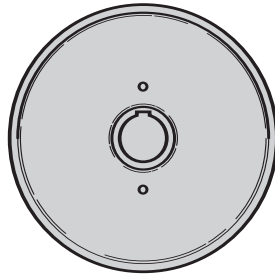


Heavy-Duty Sprockets and Traction Wheels

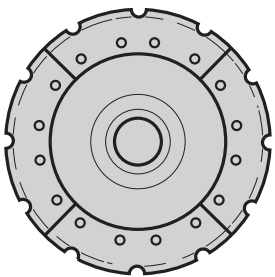
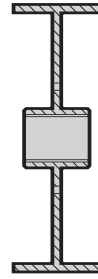
Renold Jeffrey's replaceable sprockets and traction wheels are specially designed for the realities of high-stress, heavy-duty service. All sprockets are steel carved and flame hardened for long service life. Worn tooth and rim sections are easier to replace, reducing expensive downtime and simplifying maintenance.



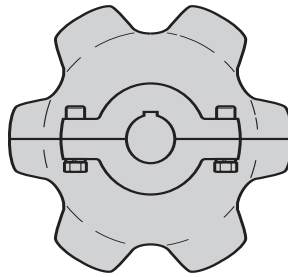
Solid Sprocket



Traction Wheel



Segmental Sprocket



Split Sprocket

Top-Quality Buckets

Renold Jeffrey provides many types of buckets for a variety of applications — from dual-strand continuous discharge to mill-duty elevators. Available in cast iron or fabricated steel. The buckets can be mounted to the chain at the factory using nuts and bolts or special riveted-type fasteners.



Cement Mill Chains and Components from Renold Jeffrey

The highest standards for reliability and innovation.

- High-quality chains
- Widest range of products in the industry
- Strong, long-lasting, and dependable
- Powerful solutions for your operation

Corporate Headquarters

2307 Maden Drive
Morristown, TN 37813

Tel: (423) 586-1951
Tel: (800) 251-9012
Fax: (423) 581-2399

National Service Center

2305 Global Way
Hebron, KY 41048

Tel: (859) 334-8520
Tel: (800) 251-9012
Fax: (859) 334-8550

West Coast Service Center

2301 A Stagecoach Rd.
Stockton, CA 95215

Tel: (209) 466-4646
Tel: (800) 251-9012
Fax: (209) 466-1749

**RENOLD
JEFFREY**

Advancing Chain Technology™

www.renoldjeffrey.com

